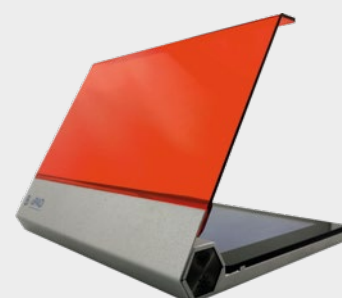
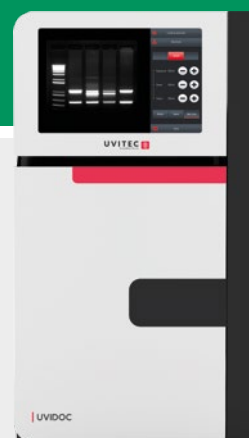


ALLSHENG  
BIOER TECHNOLOGY  
BIO-HELIX  
CAPP  
GALILEO SCIENCE  
MAJOR SCIENCE  
SIGMA  
UVITEC

## BENCH ESSENTIALS



The background is a solid teal-green color. Overlaid on this are numerous organic, cell-like shapes in various shades of green, ranging from light lime to dark forest green. These shapes are interconnected by thin, wavy lines, creating a network that resembles a molecular structure or a biological cell membrane. The shapes vary in size, with some being large and prominent, while others are smaller and more subtle.

# SERVING SCIENCE THROUGH INNOVATION

Since our establishment in the early 80's, Euroclone has given scientists a valuable opportunity to gain access to a world of products and equipment in Biotechnology.

During more than three decades of experience, our Company has evolved into a modern supplier of up-to-date and own-branded products, pursuing affordability and quality: all manufacturing procedures are strictly regulated with raw materials, bulks and final products undergoing stringent controls.

Euroclone provides innovative products, services and solutions for Molecular and Cell Biology, Genomics, Proteomics, Cytogenetics and Agro-Food Diagnostics.

From the choice of high-quality products to the after sales service, Euroclone is your reliable and solid partner for your scientific challenges.

In 2019 Euroclone is acquired by AddLife AB becoming part of an important international group. This step ensure continuity and further expansion of the company in the Italian market and in the export of the proprietary private lines, key and distinctive element of the identity of Euroclone.



---

# Index

<b>1. Thermal Cyclers</b>	<b>6</b>
<b>2. Dry Bath, Mixers and Thermomixers</b>	<b>12</b>
<b>3. Centrifuges</b>	<b>24</b>
<b>4. Shakers</b>	<b>32</b>
<b>5. Power supplies</b>	<b>38</b>
<b>6. Electrophoresis systems</b>	<b>44</b>
<b>7. Gel Doc Systems and Transilluminators</b>	<b>58</b>
<b>8. Plate washer</b>	<b>64</b>
<b>9. Services</b>	<b>68</b>



1

# THERMAL CYCLERS



# Thermal Cyclers

## GeneQ

**GeneQ** is a small personal thermal cycler, with very high performances. It has the highest ramping speed for personal thermal cyclers, with heating up to 5°C/sec, which, along the fullgraphic interface for programming, makes it one of the fastest and easiest to use thermal cyclers.

### Features

- ✓ Easy to use graphical interface software for rapid programming and data management
- ✓ Large LCD Display: 320 x 240
- ✓ Aluminium Thermalblock
- ✓ Store more than 100 user defined PCR protocols in internal
- ✓ Autorestart after power failure
- ✓ Password setting for conditional access
- ✓ Sample volume can be set to optimize thermal protocol
- ✓ Adjustable Hot-Lid
- ✓ Heating and Cooling Ramping rate up to 5°C/sec



### Specifications

- Temperature range: 4°C -99°C
- Heating rate: 5°C/sec (max)
- Cooling rate: 4°C/sec (max)
- Block temperature uniformity:  $< \pm 0,5^{\circ}\text{C}$
- Block temperature accuracy:  $< \pm 0,3^{\circ}\text{C}$
- Temperature of hot lid:  $105^{\circ}\text{C} \pm 5^{\circ}\text{C}$
- Program storage: 100 programs
- Max. Cycles number: 99
- Display: 320 x 240 LCD; 3,8 inches
- Power Supply: AC220; 50 Hz; 200 W
- Size (W x L x H): 29,7 x 21,2 x 20 cm
- Weight: 3,2 kg

### Ordering information

Code	Description
EMTC24HB	GeneQ Thermal Cycler 24 x 0,2 mL



## Life ECO

Life ECO is the most widely used format with its block housing 96 0.2 mL tubes or one 96 wells full-skirted plates.

### Features

- ✓ Easy to use graphical interface software for rapid programming and data management
- ✓ Large LCD Display: Color touch screen (5.7", 260.000 colors)
- ✓ Compact design for easy installation and transport
- ✓ Up to 30 thermal cycler can be controlled via LAN network
- ✓ Aluminium Thermalblock
- ✓ Store 250 user defined PCR protocols in internal memory (unlimited if using an external USB memory or networked PC)
- ✓ Touch down PCR protocols
- ✓ Autorestart after power failure
- ✓ Password setting for conditional access
- ✓ Sample volume can be set to optimize thermal protocol
- ✓ Adjustable Hot-Lid
- ✓ Heating and Cooling Ramping rate up to 4°C/sec



### Thermal Gradient

This feature allows to optimize PCR protocols by setting a temperature gradient during annealing. Life Eco allows the creation of thermally optimized and faster protocols, by letting users set a gradient also during elongation and denaturation steps.

### Specifications

- Temperature range: 4°C -99°C
- Heating rate: > 4°C/sec
- Cooling rate: > 4°C/sec
- Block temperature uniformity: < ± 0,4°C
- Block temperature accuracy: < ± 0,2°C
- Temperature of hot lid: 30 - 110°C
- Gradient range of temperature differential: 1 - 30°C
- Gradient range: 30 – 99°C
- Program storage: ≥ 250 programs + unlimited if using external USB memory
- Max. Cycles number: 99
- Display: 320 x 240 LCD; 5,7"
- Interfaces: USB, LAN
- Power Supply: AC110-220; 50 Hz; 600 W
- Size (W x L x H): 34,5 x 25 x 27 cm
- Weight: 10 kg

### Ordering information

Code	Description
EMTC96GHBC	LifeEco Thermal Cycler 96 x 0.2 mL, gradient, Touch screen

## GeneTouch

**GeneTouch** is a modular system composed by a base instrument and several “user switchable” thermal blocks letting every user choose his own configuration. The available blocks are:

- Dual Block: 48 x 0,2 mL + 48 x 0,2 mL (6 x 8 strip; 48 x 0,2 mL)
- 30/48 wells mixed block: 48 x 0,2 mL or 30 x 0,5 mL (4 x 12-strip; 48 x 0,2 mL; 30 x 0,5 mL)
- High Throughput 384 wells Gradient Block: 384-microplate full-skirted
- 96 wells Gradient Block: 96 well microplate (full-skirted); 12 x 8 strip; 96 x 0,2 mL
- In Situ PCR Block: 4 x standard in situ plates

GeneTouch is completed by a control software that allows the creation and management of protocols via a networked PC. This also allows to control and monitor up to 30 thermal cyclers via a LAN connection.

## Features

- ✓ Low noise (only 59 dB)
- ✓ Easy to use graphical interface software for rapid programming and data management
- ✓ Large LCD Display: 320 x 240
- ✓ Compact design for easy installation and transport
- ✓ Up to 30 thermal cycler can be controlled via LAN network
- ✓ Aluminium Thermal block
- ✓ Store more than 100 user defined PCR protocols in internal memory (unlimited if using an external USB memory or networked PC)
- ✓ Touch down PCR protocols
- ✓ Autorestart after power failure
- ✓ Password setting for conditional access
- ✓ Sample volume can be set to optimize thermal protocol
- ✓ Adjustable Hot-Lid
- ✓ Heating and Cooling Ramping rate up to 4°C/sec



## Specifications

- Temperature range: 4°C - 105°C
- Heating rate: 4°C/sec max (2,8°C/sec max for 384GA block)
- Cooling rate: 4°C/sec max (2,8°C/sec max for 384GA block)
- Block temperature uniformity:  $< \pm 0,3^{\circ}\text{C}$
- Block temperature accuracy:  $< \pm 0,3^{\circ}\text{C}$
- Temperature of hot lid: 30°C - 110°C
- Gradient range: 1°C - 30°C (only with 96G and 384GA thermal blocks)
- Program storage:  $\geq 250$  programs + unlimited if using external USB memory
- Max. Cycles number: 99
- Display: Color touch screen (6,5", 260.000 colors)
- Interfaces: USB, LAN
- Power Supply: AC110-220; 50 Hz; 600 W
- Size (W x L x H): 36,8 x 25 x 28,5 cm
- Weight: 10 kg

## Ordering information

Code	Description
EMTCE	GeneTouch Thermal Cycler Body
EMB48D	GeneTouch Block 48 x 0.2 mL Dual Block
EMB3048	GeneTouch Block 30 x 0.5 mL + 48 x 0.2 mL Mixed Block
EMB384	GeneTouch Block microplate 384-well
EMB96G	GeneTouch Block 96 x 0.2 mL, gradient
EMB4I	GeneTouch Block 4 in situ plates



The background is a solid teal color with a pattern of overlapping, organic, bubble-like shapes in various shades of green. A white circle containing the number '2' is positioned in the upper left. A vertical dotted white line extends downwards from the bottom of this circle.

2

# DRY BATH, MIXERS AND THERMOMIXERS



# Dry Bath, Mixers and Thermomixers

## Allsheng MK-20 Dry Bath Incubator

**Allsheng Dry Bath** is a microprocessor-controller product using advanced thermoelectric technique. This technique allows more stable and accurate temperature control both in the reaction block and in the sample. Optional aluminium blocks are easily replaceable, to hold different types of test tubes. Dry Bath allows to operate also in programmable mode, linking a maximum of five different temperature steps.

### Features

- ✓ LCD display. It is easy to set up and use
- ✓ Simultaneous display of set and actual time, temperature
- ✓ Easy to replace the metal blocks and is very simple to clean and sterilize
- ✓ Microprocessor controlled incubation time and temperature
- ✓ Peltier design of EMK20 provides efficient thermal control
- ✓ Beep-signal/stop after program completed



### Specifications

- Temperature Control Range: -10°C~100°C
- Timer Range: 1 min~ 99 h 59 min
- Temperature stability :  $\pm 0.5^{\circ}\text{C}$
- Display Accuracy:  $\pm 0.1^{\circ}\text{C}$
- Heating time (25 to 100°C):  $\leq 15$  min
- Cooling time (20 to -10°C):  $\leq 15$  min\*
- Heating and cooling parts: Peltier Modules
- Dimensions: (L x P x H): 300 x 220 x 180 mm
- Weight: 5 kg
- Power supply: 230 V 50 Hz
- Blocks range: see "EC Blocks table"

\*Cooling time  $\leq 15$ min (20°C to -5°C) if the room temperature is lower than 30°C; Cooling time  $\leq 15$ min (20°C to -10°C) if the room temperature is lower than 25°C

### Ordering information

Code	Description
EMK20	Dry bath - Benchtop heating block incubator, 5 different temperature steps - range T° -10 to 100°C - EC Block not included

## Allsheng T-shakers

**T-Shaker EMS100** and **EMSC100** are designed for simultaneous heating, cooling and mixing of small samples. Mixing, heating and cooling modes can be used either simultaneously or independently. The main body of the mixing block can be used with different kinds of blocks.

### Features

- ✓ LCD display. It is easy to set up and use
- ✓ Accurately control and display time, temperature and speed
- ✓ Over-heating protection device ensures safety & reliability
- ✓ Low noise working even under the speed of 1,500 RPM
- ✓ Peltier design of EMSC100 provides thermal control in a compact unit
- ✓ Easy to replace the metal blocks and is very simple to clean and sterilize
- ✓ Beep-signal/stop after program completed



### Specifications

- Temperature Control Range: RT+5°C – 100°C (**EMS100**); 0 °C~100°C (at RT ≤20°C) (**EMSC100**)
- Timer Range: 1min~99h59min
- Temperature Control Accuracy: ± 0.5°C
- Display Accuracy: ± 0.1°C
- Heating time (25 to 100°C): ≤ 15 min
- Cooling time: ≤30 min (from RT to RT-20°C)\*\*; ≤15 min (from 100°C to 20°C)\*\*
- Mixing speed: 200~1500 RPM\*
- Mixing orbit: 2 mm
- Heating and cooling parts: Peltier Modules
- Dimensions (L x P x H): 300 x 220 x 170 mm
- Weight: 8.5 kg
- Power supply: 230 V 50 Hz
- Blocks range: See "EC Blocks table"

\*Temperature and oscillation speed limit according to the type of block

\*\*Tested in ambient temperature <25°C

### Ordering information

Code	Description
EMSC100	T-Shaker Cool - Thermo Shaker Incubator (heating, cooling and mixing)
EMS100	T-Shaker Ambient - Thermo Shaker Incubator (heating and mixing)

### EC Blocks for codes EMK20 - EMS100 - EMSC100

Code	Tubes	Max. Temp.	Min. Temp. (EMK20)
EMK20A	96 x 0.2 mL	100°C	-10°C
EMK20B	54 x 0.5 mL	100°C	-10°C
EMK20C	35 x 1.5 mL	100°C	-10°C
EMK20D	35 x 2.0 mL	100°C	-10°C
EMK20E	15 x 0.5 mL + 20 x 1.5 mL	100°C	-10°C
EMK20F	24x tube Ø< 12 mm	100°C	0°C
EMK20G	12 x 15 mL Conical tube	100°C	0°C
EMK20H	6 x 50 mL Conical tube	100°C	0°C
EMK20I	103 x 67 x 30 mm Bath block	100°C	0°C
EMK20J	96 x 0.2 mL Microplate	100°C	0°C
EMK20K	24 x 5 mL tubes	100°C	0°C
EMK20L	96-Deep well plate	80°C	8°C

## CAPPRondo Single Plate Shaker

The **CAPPRondo Plate Shaker** is an ideal choice of microplate shaker for any test environment. With a tiny footprint, as small as the 96-plate size, the shaker is microprocessor-controlled for higher accuracy. The in-built counterbalance ensures a stable, quiet and long-life operation.

### Features

- ✓ Comes with interchangeable clamps that provide universal fitting for different microplates
- ✓ Provided with an accessory tube platform to accommodate 20 microtubes of 1.5/2mL
- ✓ With a wide speed setting range from 300 to 1.800 RPM and orbital motion of 2mm (1mm radius), the **CAPPRondo Plate Shaker** can perform numerous applications including PCR, ELISA, enzyme immunoassays, protein synthesis and pharmaceutical profiling
- ✓ Vortexing motion thoroughly mixes each well
- ✓ Can be used inside cold rooms or fume hoods (up to 40oC)

### Specifications

- Speed Setting: 300 to 1.800 RPM
- Digital Display: Yes
- Shaking radius: 1 mm
- Motor Type: Brushless DC
- Load Capacity: 2 kg
- In-built Counterbalance: Yes
- Power Supply: Universal (100-240V, 50/60 Hz.)
- Dimensions (W x D x H): 85 x 127 x 86mm
- Weight: 1.36 kg
- Accessories: Replaceable clamps to use different types of standard microplates



### Ordering information

Code	Description
KNCRP18X	CAPPRondo plate shaker, 300 to 1.800 RPM



## CAPPRondo 4-Place Plate Shaker

**CAPPRondo 4-Place Plate Shaker** is the ideal choice for thorough, simultaneous mixing in up to 4 individual microplates of different types. The 3 mm orbital motion movement guarantees the ultimate mixing performance, and the brushless DC motor ensures long and maintenance free operation, making CAPPRondo 4-Place Plate Shaker the ideal device for extended runs.

### Features

- ✓ Speed range from 200 to 1.200 RPM
- ✓ Compatible with all commonly used skirted microplates
- ✓ Pulse mode for continuous mixing in clockwise and counterclockwise directions from 30 to 90 seconds
- ✓ Rubber O-rings ensuring an ultimate grip for all 4 plates
- ✓ Digital display which gives the user an overview of the speed and time settings
- ✓ Small and compact design which requires minimum benchtop space
- ✓ Effortless loading and unloading and easy access to all 4 plates
- ✓ Last run memory feature
- ✓ Extremely easy to clean and maintain



### Specifications

- Motor Type: BLDC motor
- Orbital Motion: 3 mm
- Number of Plates: Up to 4
- Variable Speed: 200 RPM to 1.200 RPM
- Run Time: 1 to 999 mins and infinity mode
- Pulse Mode: Yes, Programmable (30 to 90 seconds)
- Weight: 5.4 kg
- Maximum Volume: 4 x 384 x 60  $\mu$ L
- Inbuilt Counterbalance: Yes
- Dimensions (L x W x H): 343 x 88 x 195 mm
- Digital Display: Yes
- Input Voltage: 24 V
- Attachments: Acc. All standard Skirted Microplates

### Ordering information

Code	Description
KNCRP412X	CAPPRondo 4-Place Plate Shaker 1.200 RPM

## CAPPRondo 4-Plate Incubating Shaker

NEW

The **CAPPRondo Incubation Shaker** provides thorough mixing and even heating for 96/384 well microplates. This innovative microprocessor controlled incubating shaker can be used in a wide spectrum of life science applications including immunochemistry protocols, biochemical analyses, cell culture protocols, microarrays, and more.

A bright digital display that is easy on the eyes provides quick access to key metrics such as temperature (°C or °F), speed (RPM), and time (hh:mm). Intuitive touch buttons make it easy to adjust incubation temperatures, shaking speeds, and run times. The CAPPRondo Incubation Shaker also features a programmable pulse button that provides vigorous shaking in short bursts of 30-99 seconds.

CAPPRondo Incubation Shaker holds up to 4 microwell plates. A rubber O-ring stabilizes the microplates during shaking and an internal counterbalance mechanism ensures even shaking across all plates. Incubation temperatures stay uniform across all four plates with a tiny temperature variation of only  $\pm 0.3^{\circ}\text{C}$ .

With a footprint of only 361 x 267 mm and a weight of 9.5 kg, the CAPPRondo Incubation Shaker fits in small spaces on any workbench. A maintenance-free brushless DC motor helps it to run silently for prolonged periods with minimum vibrations. The powerful DC motor provides constant speeds ranging from 200-1200 RPM.

### Features

- ✓ High performance maintenance-free DC motor with extended run times (1-999 minutes and beyond)
- ✓ Adjustable timer setting for long run times (up to 99 hours, 59 minutes)
- ✓ Large capacity stage accommodating 4 x 96/384 micro well plates
- ✓ Programmable pulse mode for vigorous mixing of samples in micro well plates
- ✓ 3 mm orbital motion for thorough shaking and mixing of microplates
- ✓ Incubation shaker with a simple design for effortless cleaning and maintenance



### Specifications

- Motor Type: Brushless DC
- Orbital Motion: 3 mm
- Number of Plates: Up to 4
- Heat Temp. Range: Ambient  $3^{\circ}\text{C}$  to  $70^{\circ}\text{C}$
- Temp. Uniformity:  $\pm 0.3^{\circ}\text{C}$
- Variable Speed: 200-1.200 RPM
- Run Time: 1-999 mins or infinite
- Pulse Mode: Programmable (30-99 sec.)
- Max. Volume: 4 x 96/384 micro well plates
- Inbuilt Counterbalance: Yes
- Dimensions (W x D x H) : 361 x 267 x 155 mm
- Weight: 9.5 kg

### Ordering information

Code	Description
KNCRPI412X	CAPPRondo Incubating Shaker, 4-Place

## Mini Vortex Mixer

**CAPPRondo Mini Vortex Mixer** offers the ideal solution for thorough mixing and quick vortexing, with high performance in terms of speed, reliability and safety.

### Features

#### 1. Speed

- ✓ With 4.5 mm orbital motion and speeds of up to 4.500 RPM, it instantly vortexes tubes and vials up to 30 mm diameter
- ✓ Highly touch-sensitive switch ensures real-time mixing
- ✓ Variable speed can be adjusted simply by turning the speed control button
- ✓ Microprocessor controlled, delivering the maximum speed even under varying load conditions

#### 2. Reliability

- ✓ Suspension design for longer switch life
- ✓ Two year manufacturer warranty for parts and labour
- ✓ Low-profile with small footprint - ideal for use on laboratory benches
- ✓ Well-balanced design, supplied with three anti-sliding feet to help the instrument to remain stable on the bench
- ✓ Inbuilt counterbalance system creates maximum vortexing action, while minimizing noise and excessive vibration

#### 3. Safety

- ✓ Brushless DC motor for safety, quick acceleration and low maintenance.
- ✓ Ideal for cold rooms and incubators.
- ✓ Maintains set speed between 4-40°C.
- ✓ Chemically resistant PC ABS molded exterior
- ✓ Robust design with aluminum die cast base



### Specifications

#### 1. Technical Data

- Motion: Orbital
- Speed Range (RPM): Up to 4.500
- Orbital Diameter: 4.5 mm
- Operating Mode: Touch
- Max. tube diameter: 30 mm
- Power Supply: Universal (90 to 230 V, 50/60 Hz.)
- Motor: Brushless DC motor
- Max. Load Capacity: 500 gm
- Permissible ambient temperature: 5 - 40 °C
- Permissible relative moisture: 80%

#### 2. General Data

- Material: PC ABS (body); Die Cast (platform)
- Dimensions (W x D x H): 100 x 100 x 67 mm
- Net Weight (kg / lbs): 0.55 / 1.21
- Power Consumption: 15 W
- Protection Class (DIN EN 60529): IP 43

### Ordering information

Code	Description
KNCRV45X	CAPPRondo Vortex Mixer 4.500 RPM w/ adjust. speed

## CAPPRondo Magnetic Stirrer

The **CAPPRondo Magnetic Stirrer** is a compact device that works at a maximum speed of 1.500 RPM.

It is manufactured with a robust stainless steel top surface which resists moderate contamination of harsh chemicals. The adjustable speed and timer function can be set and monitored on a modern real-time digital display.

### Features

- ✓ Adjustable speed and timer
- ✓ Last run memory feature
- ✓ Pulse mode works for 30 seconds in each direction, for improved mixing
- ✓ Water spill resistant – IP 65 compliant
- ✓ Slim profile – only 16.5 mm thick
- ✓ Touch control pad and digital display
- ✓ Flat surface for ease of cleaning
- ✓ Maintenance free



### Specifications

- Maximum Speed: 1.500 RPM
- Speed Setting: 15 to 1.500 RPM (increments of 50 RPM)
- Load Capacity: 800 mL
- Recommended Stir Bar Length: 25 mm
- Dimensions: 124 x 191 x 16.5 mm
- Weight: 600 g
- Pulse Function: Yes
- Timer Function: 1 to 99 minutes and infinite mode

### Ordering information

Code	Description
KNCRS15X	CAPPRondo Magnetic Stirrer 1.500 RPM w/ 1 stirring bar

## CAPPRondo Hotplate Stirrer

The **CAPPRondo Hotplate Stirrer** offers three heating modes: rapid, gradual and accurate heating. It operates with heating temperatures ranging from ambient to 550°C. Its plate surface is made of robust nano-crystalline glass ceramic and ensures full resistance towards liquid splash or temperature shocks. The CAPPRondo Hotplate Stirrer operates at a variable speed ranging from 200 to 2.200 RPM. The speed can be set up in intervals of 10 RPM and the time can be programmed from 1 to 999 minutes, or continuous, infinite operation.

The motor technology of the CAPPRondo Hotplate Stirrer ensures constant speed under varying load weight. The large user-friendly display provides an overview of all parameters and enables easy and comfortable operation. With the CAPPRondo Hotplate Stirrer the user can program up to 99 individual protocols as well as set up the programmable Pulse Mode from 30 to 99 seconds.

### Specifications

- Speed Range: 200-2.200 RPM in steps of 10 RPM
- Temperature Range: From ambient to 550°C
- Load Capacity: 20 L
- Motor Type: Brushless DC motor
- Top Plate Material: Nano-crystalline glass ceramic
- Top Plate Dimensions: 180 x 180 mm
- Time Setting: 1-999 minutes or infinite
- Programmable Modes: Up to 99 individual protocols
- Pulse Mode: Programmable, from 30 to 99 secs.
- Dimensions (W x D x H): 220 x 330 x 115 mm
- Weight: 4.5 kg
- Protection Class: IP 21



### Ordering information

Code	Description
KNCRS22H	CAPPRondo Hotplate Stirrer 2.200 RPM, 550°C ceramic, 20 L capacity, 220 V

## CAPPRondo Magnetic Hotplate Stirrer

The **CAPPRondo Magnetic Hotplate Stirrer** has a load capacity of 10 litres and comes with a ceramic coated SS plate and a powerful motor, delivering constant speed even under varying load conditions. CAPPRondo Magnetic Hotplate Stirrer offers variable speed setting, ranging from 200 to 2,200 RPM, increasing in steps of 10 RPM. It heats the samples from the ambient temperature up to 320°C and is microprocessor-controlled for stable and reliable operation. Once the plate temperature has reached 50°C, a LED indication is illuminated.

CAPPRondo Magnetic Hotplate Stirrer is programmable in terms of both speed and time. The time setting ranges from 1 to 999 minutes, and a continuous stirring mode without any time limitation can be set up. Additionally, CAPPRondo Magnetic Hotplate Stirrer has a last run memory function. To increase user comfort, CAPPRondo Magnetic Hotplate Stirrer is equipped with a large display, showing all critical parameters in a clear, visible way. It comes with a P1000 temperature probe along with a stand. Having connected the P1000 to the stirrer, the probe temperature will appear on the display. When removing the probe, the display will switch back to its default setting, showing the plate temperature. CAPPRondo Magnetic Hotplate Stirrer is extremely compact, saving valuable space on your bench.

### Specifications

- Max. Load Capacity: 10 L
- Speed Setting: 200 - 2.200 RPM, in steps of 10 RPM
- Temperature Range: from Ambient to 320°C
- Time Setting: 1-999 mins and continuous
- Digital Display: Yes. Shows Speed/Time/Actual/Set Temp. alternately
- Safe Temp. Circuit: Yes
- Plate Diameter: 140 mm
- Weight: 1.4 kg
- Dimensions (W x D x H): 248 x 156 x 104 mm
- Protection Class: IP 21
- Accessories included: CRS-21H-P and CRS-21H-S



### Ordering information

Code	Description
KNCRS21H	CAPPRondo Magnetic Hotplate Stirrer 2200 RPM, 320°C ceramic, 10 L capacity, 220 V
KNCRS21	CAPPRondo Lab Magnetic Stirrer without heating, 10 L capacity, 220 V
KNCRS21H110	CAPPRondo Magnetic Hotplate Stirrer 2200 RPM, 320°C ceramic, 10 L capacity, 110 V
KNCRS21HP	P1000 temperature probe for CAPPRondo CRS-21H Magnetic Hotplate Stirrer
KNCRS21HS	Stand for P1000 temperature probe CAPPRondo CRS-21H Magnetic Hotplate Stirrer



3

# CENTRIFUGES





## Centrifuges

### CAPPRondo Microcentrifuge

**CAPPRondo Microcentrifuge** has a lot more to offer compared to the basic microcentrifuges available in the market. It is available in two options, where the CR-68 is the basic version with fixed speed of 6.000 RPM/2.000 g and the CR-68X is the advanced version with programmable speed of up to 6.000 RPM/2.000 g and a timer function, all operated by two buttons and a digital display.

#### Features

- ✓ 8 slot closed rotor for quiet and powerful operation
- ✓ Quick operation by simply closing and opening the lid
- ✓ Electronic safety brake provides an immediate stop on lid opening
- ✓ Additional PCR strip rotor (2 x 8 x 0.2 mL) and reduction adaptors for 0.2/0.4 mL microtubes supplied along with the product
- ✓ Imbalance cut-off safety feature (CR-68X)
- ✓ Digital calibration function (CR-68X)
- ✓ Digital display of speed and timer function (CR-68X)



#### Ordering information

Code	Description
KNCR68	CAPPRondo Microcentrifuge 6.000 RPM/2.000 g
KNCR68X	CAPPRondo Microcentrifuge w/ adjustable speed and timer function, max. 6.000 RPM/2.000 g

## CAPPRondo Mini-centrifuge

**CAPPRondo Mini-centrifuge** is designed to be an easy-to-use, high performance mini-centrifuge in a modern and attractive form equipped with maintenance free drive. It accelerates up to twelve 1.5/2.0 mL mini-centrifuge tubes to a max speed of 15,000 RPM (RCF:15.595 x g) enabling to process samples rapidly. Routine runs, such as spin column preparations can be carried out with a minimum of time and effort. This compact centrifuge is also cold room and fume hood compatible.

### Features

- ✓ Lid lock safety and imbalance detection features ensure utmost safety during operation
- ✓ Unique airflow design: ensures less heat generation and lower noise levels.
- ✓ Adaptors are provided for 0.2 and 0.4/0.5 mL tubes - optional 2 x 8 x 0.2 mL strip rotors
- ✓ Quick and convenient setting because of intuitive simple interface
- ✓ Multiple parameters are displayed at a time on the large backlit LCD display
- ✓ Memory for up to 99 programs - operation records are saved in Excel sheet
- ✓ Aluminum rotor with capacity of 12 tubes of 1.5/2 mL and screw on metal lid
- ✓ Brushless DC motor: maintenance free and fit for extended runs
- ✓ Remote operation via laptop/computer
- ✓ Last run memory features



### Specifications

- Speed setting: 500 to 15,000 RPM / Min-Sec timer 1 to 999 mins
- Maximum speed RPM / RCF: (g) 15,000 RPM / 15.596 x g
- Display: Large Backlit LCD display
- Rotor Capacity: 12 place aluminum rotor with metal safety lid for 1.5/2.0 mL microtubes
- Motor Type: Brushless DC
- Noise Level: < 62 db
- Imbalance Detection: Yes
- Remote operation: Yes
- Lid Lock Safety: Yes, lid opens automatically on run completion
- Dimensions (W x D x H): 230 x 262 x 131 mm
- Accessories: Reduction Adaptors for 0.2/0.4 mL Microtubes

### Ordering information

Code	Description
KNCR1512	CAPPRondo Mini-centrifuge 15,000 RPM/15.595 g, for 12x 1.5-2.0 mL tubes
KNCR15PCR	PCR strip rotor for CAPPRondo CR-1512 w/ reduction adaptors, 1 pc.

## CAPPRondo Microplate Centrifuge

NEW

The **CAPPRondo Microplate Centrifuge** is a compact centrifuge for spinning down samples in microwell plates. This modern microplate centrifuge is compatible with both 96 well plates and 384 well plates. With its loading capacity of 2 plates per spin cycle, the CAPPRondo CR-22P Microplate Centrifuge makes quick work of centrifuging samples for PCR, ELISA, Cytokine assays among others.

Fitted with a modern control panel that includes a large digital display and soft-touch buttons, this microprocessor-controlled PCR plate spinner is intuitive and quick to set up. A modern microprocessor powers the microplate centrifuge, meticulously controlling the brushless motor for industry leading accuracy and performance.

Manufactured with advanced safety features, the CAPPRondo CR-22P Microplate Centrifuge reduces the risk of operator injury or sample loss. A lid-lock safety mechanism prevents users from accessing the rotor while its spinning. An inbuilt imbalance detection feature protects the microplate centrifuge from running with an uneven load.

### Features

- ✓ Maintenance-free brushless DC motor
- ✓ Modern microprocessor controlled centrifuge with last-run memory feature
- ✓ Lid-lock safety mechanism prevents access to the rotor while it is spinning
- ✓ Intuitive and precise volume/speed adjustment via a digital interface with soft-touch buttons
- ✓ Small footprint and low loading height for maximum space savings

### Specifications

- Dimensions (W x D x H): 330 x 265 x 161 mm
- Weight: 4 Kg (w/o rotor)
- Motor type: Brushless DC motor
- Speed setting: 462 x G (max RCF) / 2500 RPM
- Speed accuracy:  $\pm 100$  RPM
- Humidity: 80%
- Acceleration time: 30 + 5 seconds
- Deceleration time: 20 + 5 seconds
- Electrical specifications: 24 V, 1.5A
- Power consumption: 24 W
- Maximum capacity: 2 microplates (96 & 384 well)



### Ordering information

Code	Description
KNCR22P	CAPPRondo Microplate Centrifuge 2.500 RPM/ 560 g for 2x microplates

## CAPPRondo 44-place Refrigerated Centrifuge

NEW

3

CENTRIFUGES

The **CAPPRondo 44-place Refrigerated Centrifuge** is a high-performance centrifuge for spinning samples in a controlled low-temperature environment of up to  $-20^{\circ}\text{C}$  ( $\pm 4^{\circ}\text{C}$ ). Using this centrifuge, molecular biology samples such as antibodies, DNA, RNA, and PCR, among others, can be processed with ease. The microprocessor-controlled CAPPRondo 44-place Refrigerated Centrifuge features a large, four-row backlit LCD display that makes it easy to adjust key operating parameters. The control panel of this excellent centrifuge has an intuitive layout, with buttons arranged neatly around the display. Settings such as temperature, speed and time can be adjusted quickly with the push of a button.

With four interchangeable rotor options the CAPPRondo 44-place Refrigerated Centrifuge can handle a broad range of centrifugation tasks. The 44-place (22388 x g) and 24-place (21420 x g) rotor options accommodate 1.5 mL and 2 mL microcentrifuge tubes. Larger 5 mL microcentrifuge tubes can be spun using the 8-place (18462 x g) rotor. Additionally, it can accommodate PCR strips in a special PCR strip rotor (15397 x g). The CAPPRondo 44-place Refrigerated Centrifuge is powered by a maintenance-free brushless DC motor, delivering spin speeds of up to 15000 RPM. At high speeds it is stabilised by its sturdy 43-kilogram frame and rubber feet. Other safety features include an imbalance detection feature and a lid-lock mechanism that prevents access to the centrifuge while the rotor is spinning.

### Features

- ✓ Brushless, maintenance-free DC motor runs at high speeds of up to 15000 RPM
- ✓ Modern design in a clean, classic white colour
- ✓ Refrigerated benchtop centrifuge which keeps a consistent temperature, even at maximum spin speeds
- ✓ Flexible run timer (30 seconds to 999 minutes+)
- ✓ Refrigerated centrifuge with 4 swappable rotor options
- ✓ Imbalance detection feature and lid lock safety mechanism



### Specifications

- Refrigeration Temp.: Down to  $-20^{\circ}\text{C}$
- Speed Range: 500-15000 RPM
- Time Settings: 30 sec. - 999 min. or infinite
- Display: Large backlit LCD
- Programmable Features: Up to 99 user-defined programmes of four lines each
- Lid-lock Safety Feature: Yes
- Imbalance Detection: Yes
- Dimensions (W x D x H): 452 x 314 x 278 mm
- Weight: 43 kg (incl rotor)

### Ordering information

Code	Description
KNCR1544R	CAPPRondo Refrigerated Centrifuge 15000 RPM, 220 V
KNCR1544	Fixed angle rotor for KNCR1544R for 44x 1.5 mL/ 2.0 mL microtubes
KNCR1524	Fixed angle rotor for KNCR1544R for 24x 1.5 mL/ 2.0 mL microtubes
KNCR158	Fixed angle rotor for KNCR1544R for 8x 5.0 mL microtubes
KNCR154	Fixed angle rotor for KNCR1544R for 4 strips of 8x 0.2 mL/ 0.5 mL PCR tubes



KNCR1544

Fixed angle rotor for  
KNCR1544R for  
44 x 1.5 mL/2.0 mL microtubes



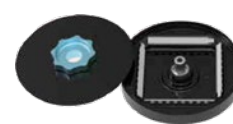
KNCR1524

Fixed angle rotor for  
KNCR1544R for  
24 x 1.5 mL/2.0 mL microtubes



KNCR158

Fixed angle rotor for  
KNCR1544R for 8 x 5.0 mL  
microtubes



KNCR154

Fixed angle rotor for  
KNCR1544R for 4 strips of  
8 x 0.2 mL/0.5 mL PCR tubes

## CAPPRondo Universal Centrifuge

NEW

**CAPPRondo Universal Centrifuge** has been developed after much research of user feedback and expectations. Occupying a minimal amount of bench space, it offers powerful and efficient centrifugation whilst maintaining a high performance over a long time of use. The wide range of rotor options guarantee the most versatile scope of application. The extremely user-friendly interface enables you to program the device according to your specific needs. The brushless DC motor technology sustains durability and high performance over many years of use.

CAPPRondo Universal Centrifuge operates with adjustable speeds ranging from 500 to 4.500 RPM. It has multiple rotor options - with both swing-out and fixed-angle rotors. It is equipped with a large digital display which visualises multiple parameters in the clearest, most comfortable way. Nine acceleration and nine deceleration modes enable you to start and stop the device without disturbing any fragile samples. Additionally, CAPPRondo Universal Centrifuge has an adjustable timer which can be set from 1 to 999 minutes; or the infinite centrifugation mode which is without any time limitation. User safety is increased thanks to the electronic imbalance detection feature, which is activated by any uneven loading of samples.

This centrifuge features a Lid Lock Safety Break, ensuring that the lid remains closed until the rotor has fully stopped its operation. The Emergency Lid Release enables you to open the device once any electricity supply has been removed. To ensure the ultimate centrifugation performance, CAPPRondo Universal Centrifuge offers a short spin feature for ultra-short centrifugation and pelleting. The stainless-steel chamber rotor is fully corrosion-free and extremely easy to clean. CAPPRondo Universal Centrifuge has an intelligently designed airflow system, which prevents any increase in sample temperature. It has a low-height design, which enables easy loading and unloading of samples.

### Specifications

- Speed Range: 500 - 4.500 RPM / (g) varies per rotor type
- Motor Type: Brushless DC motor (BLDC)
- Remote Operation: Yes, via USB
- Display: Yes, large LED Display
- Timer Setting: from 1 to 999 mins or infinite mode
- Programmable: Yes, up to 99 programs
- Imbalance Detection: Yes
- Rotors (optional): Multiple rotor options (swing-out and fixed-angle rotors)
- Dimensions (W x D x H): 595 x 436 x 311 mm
- Weight: 23 kg (without rotor)



### Ordering information

Code	Description
KNCRC432X	CAPPRondo Universal Centrifuge (up to 4 x 100 mL)
<b>Rotor Options</b>	
KNCR43100	4 x 100 mL swing rotor with Bio Safety Cap, RCF 3164 x g
KNCR4315	16 x 15 mL swing rotor with stainless steel tubes, RCF 3485 x g
KNCR43PL	2 x Microplates swing rotor, RCF 2355 x g
KNCR43100F	4 x 100 mL fixed-angle rotor, RCF 2559 x g
KNCR4350F	6 x 50 mL fixed-angle rotor, RCF 2644 x g
KNCR4315F24	24 x 15 mL fixed-angle rotor, RCF 2852 x g
KNCR4315F16	16 x 15 mL fixed-angle rotor, RCF 3144 x g
KNCR4310	32 x 6 mL swing rotor, RCF 3164 g (includes 32 x 6 mL SS tubes dia.13 mm, length 100 mm)

**KNCR43100**

4 x 100 mL swing rotor  
with Bio Safety Cap, RCF  
3164 x g

**KNCR4315**

16 x 15 mL swing rotor  
with SS tubes, RCF  
3485 x g

**KNCR43PL**

2 x microplates swing  
rotor, RCF 2355 x g

**KNCR43100F**

4 x 100 mL fixed-angle  
rotor, RCF 2559 x g

**KNCR4350F**

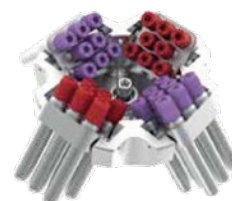
6 x 50 mL fixed-angle  
rotor, RCF 2644 x g

**KNCR4315F24**

24 x 15 mL fixed-angle  
rotor, RCF 2852 x g

**KNCR4315F16**

16 x 15 mL fixed-angle  
rotor, RCF 3144 x g

**KNCR4310**

32 x 6 mL swing rotor,  
RCF 3164 x g

## Other centrifuges

### Sigma

**Sigma** centrifuges are high performance, reliable and safe. Whether you are looking for a compact microlitre centrifuge, a high-performance benchtop centrifuge or a large-capacity self-standing centrifuge – refrigerated, unrefrigerated, heated, or especially quiet and energy efficient – Sigma has the right solution for every specific customer requirement.



The background is a solid teal color with a pattern of overlapping, organic, bubble-like shapes in various shades of green. A white dotted line runs vertically from the top left towards the bottom. At the top of this line is a white circle containing the number 4.

4

# SHAKERS





## Tube Shaker, Tube Roller and Tube Rotator

### Tube roller

**CAPPRondo Tube Roller** ensures efficient mixing of blood samples, viscous substances and liquid-solid suspensions. The programmable pulse mode feature with Run-Pause-Run motion and variable time setting from 30 to 99 seconds, give the user additional flexibility and improve the mixing process. Apart from the rolling motion, an additional rocking movement has been applied to the rollers to ensure throughout optimal mixing. Equipped with a brushless DC motor, CAPPRondo Tube Roller provides quiet and maintenance free operation, highly suitable for extended runs.

CAPPRondo Tube Roller can accommodate up to 15 blood tubes of 7 mL. The user interface panel is highly intuitive and displays both the time and speed. CAPPRondo Tube Roller operates at speed ranging from 10 up to 80 RPM. The user can program up to 9 customized protocols. With an increased user comfort and a low contamination risk in focus, CAPPRondo Tube Roller operates with easily removable and autoclavable rollers. The stackable design and relatively small footprint will optimize your bench space. CAPPRondo Tube Roller is also suitable for use in incubators in temperatures up to 40°C and humidity up to 80%.

### Specifications

- Motor Type: Brushless DC motor
- Motion: Rocking and rolling
- Number Of Tubes: up to 15 x 7 mL blood tubes
- Speed Range: 10 to 80 RPM
- Time Range: 1 to 99 mins
- Programmable Range: 9 user-defined programs
- Operation Type: Continuous and timed operation
- Removable Rollers: Yes, tool free removal and fitment
- Pulse Mode: Yes (Run-Pause-Run mode)
- Tilt Angle: +/-3°
- Protection Class: IP21
- Weight: 6 kg
- Load Capacity: 2 kg
- Dimensions (W x D x H): 502 x 92.5 x 301 mm
- Warranty: 2 years



### Ordering information

Code	Description
KNCRR08X	CAPPRondo Tube Roller 80 RPM

## Tube rotator

**CAPPRondo Tube Rotator** has a strong, metal design which, along with the rubber feet, ensures its total stability during operation. The compact design uses a minimum amount of benchtop space. The gentle but effective mixing occurs at a fixed speed of 30 RPM with an accuracy of  $\pm 2$  RPM.

CAPPRondo Tube Rotator has a maximum capacity of 16 tubes, consisting of 4 ESR and 12 blood collection tubes. Its maximum operational weight capacity is 1.5 kg. The disc plate is fixed at an angle of 38 degrees and is easily removed for cleaning or replacement. CAPPRondo Tube Rotator operates silently in the continuous mode.

### Specifications

- Max. Capacity: 16 Tubes (4 ESR Tubes and 12 Blood Collection Tubes)
- Motor Type: AC Synchronous
- Speed: Fixed Speed of 30 RPM
- Operation: Continuous / Infinite
- Speed Accuracy:  $\pm 2$  RPM
- Angle Of Disc Plate: Fixed angle of 38 degrees
- Noise Level: Noiseless operation
- Load Capacity: 1.5 kg
- Dimensions: 278 x 183 x 252 mm
- Protection Class: IP 21



### Ordering information

Code	Description
KNCRR0316	CAPPRondo Tube Rotator for 16 blood tubes

## CAPPRondo Platform Shaker

NEW

**CAPPRondo Platform Shaker** offers a shaking mass capacity of 7.5kg. Its orbital motion, along with the motor technology ensures thorough mixing and a long-life, maintenance-free operation, making it ideal for extended runs.

The speed settings range from 50 to 300 RPM and the time can be set up from 1 to 99 hours and 59 minutes.

CAPPRondo Platform Shaker has multiple programmable modes, such as motion direction, speed, time, dwell time, sequence and loop operation. The user can program up to six individual protocols, each one with additional nine sub-protocols.

Thanks to the multiple attachments, CAPPRondo Platform Shaker is universally compatible with almost all commonly used vessels.

In case of a power failure, the option of Auto Power On will ensure the operation runs for the remaining time after resumption.

### Specifications

- Shaking Movement: Orbital (Ø20 mm) / Linear
- Max. Loading Capacity: 7.5 kg
- Speed Range: 50-300 RPM
- Motor Type: Brushless DC motor
- Time Settings: 0 to 99 hours and 59 minutes
- Dimensions (W x D x H): 408 x 350 x 99 mm
- Platform Size: 330 x 330 mm
- Protection Class: IP 21
- Programmable Features: Up to 6 individual protocols, each with additional 9 sub-programmes Programmable Looping: YES

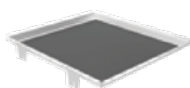


### Ordering information

Code	Description
KNCRP3X	CAPPRondo Platform Shaker ø 20 mm, with linear and orbital motion, 7.5 kg capacity
KNCRPU	Universal Platform with Adjustable Bars (Flask capacity 9 x 250 mL, 6 x 500 mL)
KNCRPD	Disk Attachment Base Plate with Slip-resistant Tray
KNCRPC9500	Base Plate with 9 Plastic Clamps: 9 x 250 mL
KNCRPF	Funnel Attachment
KNCRPCS9250	Base Plate with 9 Stainless Steel Clamps: 9 x 250 mL
KNCRPCS9500	Base Plate with 9 Stainless Steel Clamps: 9 x 500 mL
KNCRPCS100	Stainless Steel Clamp for 100 mL Flask
KNCRPCS150	Stainless Steel Clamp for 150 mL Flask
KNCRPCS250	Stainless Steel Clamp for 250 mL Flask
KNCRPCS500	Stainless Steel Clamp for 500 mL Flask
KNCRPCS1000	Stainless Steel Clamp for 1000 mL Flask



KNCRPU



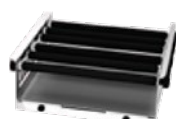
KNCRPD



KNCRPC9250



KNCRPC9500



KNCRPF



KNCRPCS9250



KNCRPCS9500



KNCRPCS250

## CAPPRondo 3D Shaker

**CAPPRondo 3D Shaker** operates at a variable speed range from 10 to 120 RPM. The brushless DC motor ensures stable, quiet and maintenance free operation, which is perfectly suited for extended runs. The three dimensional rocking and tumbling motion provides thorough homogenous mixing. The user can save up to 9 individual protocols or use the pulse mode with Run-Pause-Run operation at a programmable time interval ranging from 30 to 99 seconds.

CAPPRondo 3D Shaker can be programmed to run from 1 up to 999 minutes, or continuously in the infinite mode. To assure total stability on the bench, CAPPRondo 3D Shaker is equipped with non-slip rubber feet and comes with a spiked rubber mat. Optionally, a sticky pad mat can be ordered. CAPPRondo 3D Shaker is easy to clean and complies with Protection Class IP 21.

### Specifications

- Load Capacity: 5 kg
- Speed Range: 10-120 RPM
- Motor Type: BLDC (Brushless DC motor)
- Movement: Tumbling 7°
- Run Time: 1-999 minutes or infinite
- Programmable Mode: Up to 9 user defined protocols
- Pulse Mode: Run-Pause-Run programmable from 30 to 99 secs.
- Display: 7 Segment LED
- Accessories: Spiked rubber mat (included), Sticky pad mat (optional)
- Plate size: 350 x 350 mm
- Protection Class: IP 21



### Ordering information

Code	Description
KNCR308X	CAPPRondo 3D Shaker 5 kg capacity

5

# POWER SUPPLIES



## Power supplies

### Mini Pro 300V - Major Science

Featuring in small size and versatility, the newly designed **Mini Pro 300V Power Supply** is an ideal choice for any researchers. Capable of providing constant voltage or current in 1 V or 1 mA increment, the unit is perfectly suitable to run both vertical polyacrylamide or horizontal agarose gel electrophoresis experiments. Continuous or timed operation can be easily set up using the simple and user-friendly interface. Moreover, the upgraded 2 step programmable function is more practical for protein electrophoresis.

Mini Pro 300V feature 2 electrode pairs, allowing 2 gels to be run simultaneously, saving both time and valuable bench space. With an universal voltage rating, Mini Pro 300V is also designed and constructed to the most rigorous safety standards.

#### Features

- ✓ Constant voltage or constant current operation
- ✓ 1 V increment voltage control; 1 mA increment current control
- ✓ Max. 300 V, 400 mA and 60 W for Mini Pro 300 V
- ✓ Two pairs of outlet terminals
- ✓ Timer with alarm function
- ✓ Safety device
- ✓ Compact size and lightweight
- ✓ Competitive pricing choice
- ✓ Packages with midi sized horizontal electrophoresis systems and vertical electrophoresis systems
- ✓ 2 step programmable control



#### Specifications

- Output Voltage / Inc.:
  - Step 1: 10 – 300 V / 1 V
  - Step 2: 10 – 300 V / 1V
- Output Current / Inc.:
  - Step 1: 10 – 400 mA / 1 mA
  - Step 2: 10 – 400 mA / 1 mA
- Power: 60 W
- Output Type: Constant voltage or constant current
- Control: Microprocessor controller
- Terminal Pairs: 2 pairs
- Timer: 999 (min) with alarm / continuous (set=0)
- Safety Device: No load detection; shrouded plugs and sockets
- Operation Temperature: 4°C – 40°C
- Dimension (W x L x H): Approx. 5.5" x 7.5" x 3.3" (140 x 191 x 84 mm)
- Material: Polycarbonate housing and aluminum base plates
- Weight: Approx. 2.2 lb (1 kg)
- Rated Voltage: 100 - 240V~, 50-60 Hz, 2A
- Program: 2-STEP Program
- Presetting Value:
  - Step 1 (V: 300V); Step 2 (V: 300 V)
  - Step 1 (A: 16mA); Step 2 (A: 24 mA)
  - Step 1 (T: 15 min); Step 2 (T: 120 min)

#### Ordering information

Code	Description
EMMINI300	Mini Pro 300V Power Supply



## MP310V Power Supply - Major Science

**Major Science** offers a models of electrophoresis power supply is constructed with microprocessor controller and 4 pairs of outlet terminals which covers the broadest range of application in general laboratory. The microprocessor control can perform either continuous or timed output, and user is able to pause and resume anytime without resetting the timer.

MS Lively Power Supply is power enough to perform horizontal and protein electrophoresis as well as two dimensional electrophoresis SDS PAGE applications. In addition, it can operate with a fully programmable mode and offer up to 6 multi-step setting conditions. The 2.4" TFT-LCD colored screen also allows you to see all the running/setting conditions while operating. For those beginners in electrophoresis, the built-in data for some typical running condition could be extremely helpful. The model is designed with great safety features to ensure safety of the lab and experiment.

### Features

- ✓ Four pairs of output terminals
- ✓ 2.4" TFT-LCD colored screen shows all parameters during operation
- ✓ Timer with alarm function
- ✓ Compact size with stackable case
- ✓ Constant voltage/ current/ power operation mode
- ✓ Typical Running condition helps electrophoresis beginner
- ✓ Wide application for DNA, RNA and protein electrophoresis and blotting
- ✓ Advanced safety device design
- ✓ Universal rated voltage for worldwide distributions



### Specifications

- Output Voltage / Inc.: 5 – 300 V / 1 V
- Output Current / Inc.: 1 – 700 mA / 1 mA
- Power: Output: 150 W; Input: 200 W
- Rated Voltage: 100-240 V $\sim$ ; 47-60 Hz
- Type Of Output:
  1. Voltage or Current with automatic crossover
  2. When target constant mode is set, system automatically adjusts the two other parameter to maximum to allow constant run (later could be changed by user)
- Program Storage: 30 programmed files
- Program Multi-Step: Up to 6 steps
- Editable Program Function:
  1. Typical running conditions program
  2. Manual editable program
- Display: 2.4" TFT
- Control: Microprocessor controller
- Safety Device:
  - No Load detect
  - Leakage detect
  - Over temperature protection
  - Over load detection
  - Sudden load change detection (could be enabled by proper setting)
  - Shrouded plugs and sockets
- Timer:
  - Constant: 9999 (min) with alarm / continuous
  - Program: 999 (min) with alarm / continuous
- Crossover: YES
- Stackable: YES
- Automatic Recovery After Power Failure: YES
- Operating Temperature: 4° C- 40°C
- Construction Material: PC housing and flame retardant ABS faceplate
- Dimension (W x L x H): Approx. 8.5" x 13.2" x 4.1" (215 x 335 x 104 mm)
- Weight: Approx. 4.6 lb (2.1 kg)

### Ordering information

Code	Description
EMMP310V	MP310V Power Supply

## MP510V Power Supply - Major Science

**Major Science** offers a model of gel electrophoresis apparatus is constructed with a microprocessor controller and 4 pairs of outlet terminals which covers the broadest range of applications in general laboratories. The microprocessor control can perform either continuous or timed output, and users are able to pause and resume anytime without resetting the timer.

MS Lively Power Supply is powerful enough to perform horizontal and vertical electrophoresis as well as two-dimensional electrophoresis SDS-PAGE applications. In addition, it can operate with a fully programmable mode and offer up to 6 multi-step setting conditions. The 2.4" TFT-LCD colored screen also allows you to see all the running/setting conditions while operating. For those beginners in electrophoresis, the built-in data for some typical running conditions could be extremely helpful. are designThe model is designed with great safety features to ensure the safety of the lab and experiment.

### Features

- ✓ Four pairs of output terminals
- ✓ 2.4" TFT-LCD colored screen shows all parameters during operation
- ✓ Timer with alarm function
- ✓ Compact size with stackable case
- ✓ Constant voltage/ current/ power operation mode
- ✓ Typical Running Condition helps electrophoresis beginner
- ✓ Wide application for DNA, RNA, protein, IEF and DGGE electrophoresis
- ✓ Advanced safety device design
- ✓ Universal rated voltage for worldwide distributions



### Specifications

- Output Voltage / Inc.: 5 – 300 V / 1 V
- Output Current / Inc.: 10 - 3,000 mA / 10 mA
- Power: 300 W
- Rated Voltage: 100-240 V~; 47-60 Hz
- Type Of Output:
  1. Voltage or Current with automatic crossover
  2. When target constant mode is set, system automatically adjusts the two other parameter to maximum to allow constant run (later could be changed by user)
- Program Storage: 30 programmed files
- Program Multi-Step: Up to 6 steps
- Editable Program Function:
  1. Typical running conditions program
  2. Manual editable program
- Display: 2.4" TFT
- Control: Microprocessor controller
- Safety Device: No Load detect, Leakage detect, Over temperature protection, Over load detection, Sudden load change detection (could be enabled by proper setting), Shrouded plugs and sockets
- Timer:
  - Constant: 9999 (min) with alarm / continuous
  - Program: 999 (min) with alarm / continuous
- Crossover: YES
- Stackable: YES
- Automatic Recovery After Power Failure: YES
- Operating Temperature: 4°C- 40°C
- Construction Material: PC housing and flame retardant ABS faceplate
- Dimension (W x L x H): Approx. 8.5" x 13.2" x 4.1" (215 x 335 x 104 mm)
- Weight: Approx. 4.6 lb (2.1 kg)

### Ordering information

Code	Description
EMMP510V	MP510V Power Supply



The background is a solid teal color with a pattern of overlapping, organic, bubble-like shapes in various shades of green. A white dotted line runs vertically from the top left towards the bottom. At the top of this line is a white circle containing the number 6.

6

# ELECTROPHORESIS SYSTEMS



# Horizontal Electrophoresis Systems

## Minigel Systems

Galileo Bioscience minigel systems are ideal for use with low to medium sample numbers. Designed for a quick and reproducible separations, these minigel systems are perfectly suited for the daily needs of the research laboratory.

### System Components

- ✓ UV-Transmissible (UVT) Gel Tray with two Comb position
- ✓ Two Combs

### Convenient Handling

- ✓ Easy-to-use casting systems - gel directly in the chamber by 90 degree rotation of the rubbers-seal-equipped gel tray
- ✓ Labeled Combs for easy identification of Comb type
- ✓ Venting slot prevents water condensation for clear gel viewing
- ✓ Gel tray and chamber lid are made of UV-Transmissible acrylic glass enabling the gel to be viewed under UV excitation

### Accessories

A wide range of Combs, UV-transmissible gel trays featuring various Comb positions, multi casting rails for pouring several gels simultaneously, adjustable universal casting rail to accommodate gel trays of various sizes are available to complement this range.

## Mini S

The system Mini S includes:

- Buffer Chamber with Platinum Electrodes
- SuperSafe Lid with Attached Leads
- Gasketed UV-Transmissible (UVT) Gel Tray
- 2 Combs: 1.5 mm thickness (6, 10 teeth)

### Features

- ✓ Gel Size: 7 x 8 cm
- ✓ Footprint: 12 x 9.5 x 16 cm
- ✓ Sample Flexibility: max. 24
- ✓ Buffer Volume: 400 mL
- ✓ Gel Volume: 30 mL



### Ordering information

Code	Description
EM40-0708	Minigel System S, gasketed UVT gel tray, 7 cm x 8 cm. Includes 1x 6 tooth and 1x 10 tooth comb, 1.5 mm thick
<b>Accessories</b>	
EM40-0708-10C	Comb 1.0 mm thick/10 tooth for Minigel System S, Sample volume: 18 µl
EM40-0708-10D	Comb 1.5 mm thick/10 tooth for Minigel System S, Sample volume: 26 µl
EM40-0708-12C	Comb 1.0 mm thick/12 tooth for Minigel System S, Sample volume: 14 µl
EM40-0708-12D	Comb 1.5 mm thick/12 tooth for Minigel System S, Sample volume: 21 µl
EM40-0708-5C	Comb 1.0 mm thick/5 tooth for Minigel System S, Sample volume: 42 µl
EM40-0708-5D	Comb 1.5 mm thick/5 tooth for Minigel System S, Sample volume: 64 µl
EM40-0708-6C	Comb 1.0 mm thick/6 tooth for Minigel System S, Sample volume: 34 µl
EM40-0708-6D	Comb 1.5 mm thick/6 tooth for Minigel System S, Sample volume: 51 µl
EM40-0708-8C	Comb 1.0 mm thick/8 tooth for Minigel System S, Sample volume: 24 µl
EM40-0708-8D	Comb 1.5 mm thick/8 tooth for Minigel System S, Sample volume: 36 µl
EM40-0708-PD	Preparative Comb 1.5 mm thick/2 tooth for Minigel System S, Sample volume: 320/28 µl
EM40-0708-UVT	Gasketed UVT gel tray, 7 cm x 8 cm for Minigel System S
EM40-0708-CST	Multiple Casting Chamber for Minigel System S (holds up to 3 UVT trays)
EM40-0708-GK	Replacement Gaskets (set of 2) for Minigel System S

## Mini M

### System Components:

- Buffer Chamber with Platinum Electrodes
- SuperSafe Lid with Attached Leads
- Gasketed UV-Transmissible (UVT) Gel Tray
- 2 Combs: 1.5 mm thick (10, 14 teeth)

### Features

- ✓ Gel Size: 9 x 11 cm
- ✓ Footprint: 15 x 9.5 x 22 cm
- ✓ Sample Flexibility: max. 36
- ✓ Buffer Volume: 600 mL
- ✓ Gel Volume: 50 mL



### Ordering information

Code	Description
EM40-0911	Minigel System M, gasketed UVT gel tray, 9 cm x 11 cm. Includes 1x 10 tooth and 1x 14 tooth comb, 1.5 mm thick
<b>Accessories</b>	
EM40-0911-10C	Comb 1.0 mm thick/10 tooth for Minigel System M, Sample volume: 25 µl
EM40-0911-10D	Comb 1.5 mm thick/10 tooth for Minigel System M, Sample volume: 38 µl
EM40-0911-12C	Comb 1.0 mm thick/12 tooth for Minigel System M, Sample volume: 20 µl
EM40-0911-12D	Comb 1.5 mm thick/12 tooth for Minigel System M, Sample volume: 30 µl
EM40-0911-14C	Comb 1.0mm thick/14 tooth for Minigel System M, Sample volume: 16 µl
EM40-0911-14D	Comb 1.5 mm thick/14 tooth for Minigel System M, Sample volume: 25 µl
EM40-0911-5C	Comb 1.0mm thick/5 tooth for Minigel System M, Sample volume: 58 µl
EM40-0911-5D	Comb 1.5 mm thick/5 tooth for Minigel System M, Sample volume: 86 µl
EM40-0911-8C	Comb 1.0 mm thick/8 tooth for Minigel System M, Sample volume: 34 µl
EM40-0911-8D	Comb 1.5 mm thick/8 tooth for Minigel System M, Sample volume: 51 µl
EM40-0911-9C	1X Microtiter format Comb 1.0 mm thick/9 tooth for Minigel System M, Sample volume: 27 µl
EM40-0911-9D	1X Microtiter format Comb 1.5 mm thick/9 tooth for Minigel System M, Sample volume: 40 µl
EM40-0911-18C	2X Microtiter format Comb 1.0 mm thick/18 tooth for Minigel System M, Sample volume: 11 µl
EM40-0911-18D	2X Microtiter format Comb 1.5 mm thick/18 tooth for Minigel System M, Sample volume: 16 µl
EM40-0911-PD	Preperative Comb 1.5 mm thick/2 tooth for Minigel System M, Sample volume: 439/28 µl
EM40-0911-UVT	Gasketed UVT gel tray, 9 cm x 11 cm for Minigel System M
EM40-0911-CST	Multiple Casting Chamber for Minigel System M (holds up to 3 UVT trays)
EM40-0911-GK	Replacement Gaskets (set of 2) for Minigel System M

## Mini L

### System Components:

- Buffer Chamber with Platinum Electrodes
- SuperSafe Lid with Attached Leads
- Gasketed UV-Transmissible (UVT) Gel Tray
- 2 Combs: 1.5 mm thick (12, 20 teeth)

### Features

- ✓ Gel Size: 12 x 14 cm
- ✓ Footprint: 17 x 9.5 x 25 cm
- ✓ Sample Flexibility: max. 50
- ✓ Buffer Volume: 800 mL
- ✓ Gel Volume: 85 mL





## Ordering information

Code	Description
EM40-1214	Minigel System L, gasketed UVT gel tray, w/ 4 comb slots, 12 cm x 14 cm. Includes 1x 12 tooth and 1x 20 tooth comb, 1.5 mm thick
EM40-1214R	Minigel System L, 12 x 14 cm, w/ integral buffer circulation, gasketed UVT gel tray
<b>Accessories</b>	
EM40-1214-16C	Comb 1.0 mm thick/16 tooth for Minigel System L, Sample volume: 20 µl
EM40-1214-16D	Comb 1.5 mm thick/16 tooth for Minigel System L, Sample volume: 30 µl
EM40-1214-20C	Comb 1.0 mm thick/20 tooth for Minigel System L, Sample volume: 15 µl
EM40-1214-20D	Comb 1.5 mm thick/20 tooth for Minigel System L, Sample volume: 22 µl
EM40-1214-24C	Comb 1.0 mm thick/24 tooth for Minigel System L, Sample volume: 11 µl
EM40-1214-24D	Comb 1.5 mm thick/24 tooth for Minigel System L, Sample volume: 17 µl
EM40-1214-8C	Comb 1.0 mm thick/8 tooth for Minigel System L, Sample volume: 47 µl
EM40-1214-8D	Comb 1.5 mm thick/8 tooth for Minigel System L, Sample volume: 70 µl
EM40-1214-12C	1X Microtiter format Comb 1.0 mm thick/12 tooth for Minigel System L, Sample volume: 27 µl
EM40-1214-12D	1X Microtiter format Comb 1.5 mm thick/12 tooth for Minigel System L, Sample volume: 40 µl
EM40-1214-25C	2X Microtiter format Comb 1.0 mm thick/25 tooth for Minigel System L, Sample volume: 11 µl
EM40-1214-25D	2X Microtiter format Comb 1.5 mm thick/25 tooth for Minigel System L, Sample volume: 16 µl
EM40-1214-9C	1X Microtiter format Comb 1.0 mm thick/9 tooth (8 sample lanes & 1 marker) for Minigel System L, Sample volume: 35 µl
EM40-1214-9D	1X Microtiter format Comb 1.5 mm thick/9 tooth (8 sample lanes & 1 marker) for Minigel System L, Sample volume: 40 µl
EM40-1214-PD	Preparative Comb, 1.5 mm thick for Minigel System L, Sample volume: 596/28 µl
EM40-1214-WC	Wall Comb, 1.5 mm thick for Minigel System L
EM40-1214-GK	Replacement Gaskets (set of 2) for Minigel System L
EM40-1214-UVT12	Gasketed UVT gel tray, 12 cm x 14 cm, 12 comb slots for Minigel System L
EM40-1214-UVT4	Gasketed UVT gel tray, 12 cm x 14 cm, 4 comb slots for Minigel System L
EM40-1214-CST	Multiple Casting Chamber for Minigel System L (holds up to 3 UVT trays)

## Mini ExW

### System Components:

- Buffer Chamber with Platinum Electrodes
- SuperSafe with Attached Leads, Casting Chamber
- Gasketed UV-Transmissible (UVT) Gel Tray
- 4 Combs: 1.5 mm thickness (50 teeth microtiter format)



## Features

- ✓ Gel Size: 23 x 14 cm
- ✓ Footprint: 30 x 10.5 x 24 cm
- ✓ Sample Flexibility: max. 200
- ✓ Buffer Volume: 800 mL
- ✓ Gel Volume: 160 mL

## Ordering information

Code	Description
EM40-2314	Wide Format Gel System, UVT gel tray w/end gates, 23.5 cm x 14 cm. Includes 4x 50 tooth, 1.5 mm combs
<b>Accessories</b>	
EM40-2314-26D	1X Microtiter format Comb 1.5 mm thick/26 tooth for Extra Wide and Extra Wide Large Format Gel Systems, Sample volume: 40 µl
EM40-2314-GK	Replacement Gaskets, set of 2, for Extra Wide and Extra Wide Large Format Gel Systems
EM40-2314-MT2C	2X Microtiter format Comb 1.0 mm thick/50 tooth for Extra Wide and Extra Wide Large Format Gel Systems, sample volume: 11 µl
EM40-2314-MT2D	2X Microtiter format Comb 1.5 mm thick/50 tooth for Extra Wide and Extra Wide Large Format Gel Systems, sample volume: 16 µl



Code	Description
EM40-2314-MTC	1X Microtiter format Comb 1.0 mm thick/25 tooth for Extra Wide and Extra Wide Large Format Gel Systems, Sample volume: 27 $\mu$ l
EM40-2314-MTD	1X Microtiter format Comb 1.5 mm thick/25 tooth for Extra Wide and Extra Wide Large Format Gel Systems, Sample volume: 40 $\mu$ l
EM40-2314-UVT	UVT gel tray, 23.5 cm x 14 cm w/ gasketed end gates for Wide Format Gel System

## 1. Maxigel Systems

**Maxi Gel Systems** are very high quality electrophoresis systems designed for medium to high sample throughput (up to 600 samples can be run simultaneously) and for high-resolution nucleic acid separations requiring long migration paths (the Maxi L system allows 40 cm long runs).

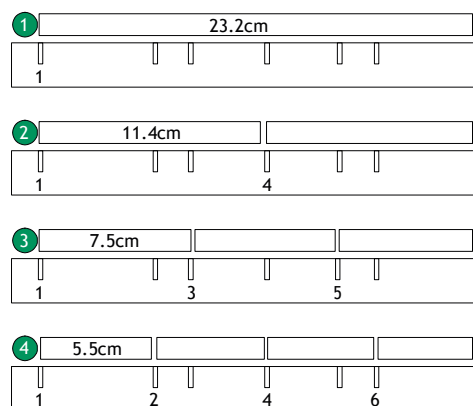
### Maxi M

System Components:

- Buffer Chamber with Platinum Electrodes
- SuperSafe Lid with Attached Leads
- UV-Transmissible (UVT) Gel Tray with Endgates
- Three Point Leveling Base
- 3 Combs: 1.5 mm thickness (16, 24, 36 teeth)

### Features

- ✓ Gel Size: 20 x 25 cm
- ✓ Footprint: 29 x 10 x 37 cm
- ✓ Sample Flexibility: max. 168
- ✓ Buffer Volume: max. 2300 mL
- ✓ Gel Volume: 250 mL



### Ordering information

Code	Description
EM41-2025	Maxigel Horizontal System M, 20 cmW x 25 cmL UVT Gel Tray w/ end gates. Includes 1x 16 tooth, 1x 24 tooth and 1x 36 tooth comb, 1.5 mm thick
EM41-2025R	Maxigel Horizontal System M, w/ integral buffer circulation, 20 cmW x 25 cmL gel size
<b>Accessories</b>	
EM41-2025-12C	Comb 1.0 mm/12 teeth for Maxigel Horizontal System M, Sample volume: 54 $\mu$ l
EM41-2025-12D	Comb 1.5 mm/12 teeth for Maxigel Horizontal System M, Sample volume: 75 $\mu$ l
EM41-2025-16C	Comb 1.0 mm/16 teeth for Maxigel Horizontal System M, Sample volume: 39 $\mu$ l
EM41-2025-16D	Comb 1.5 mm/16 teeth for Maxigel Horizontal System M, Sample volume: 59 $\mu$ l
EM41-2025-18C	Microtiter Comb 1.0 mm/18 teeth for Maxigel Horizontal System M, Sample volume: 27 $\mu$ l
EM41-2025-18D	Microtiter Comb 1.5 mm/18 teeth for Maxigel Horizontal System M, Sample volume: 40 $\mu$ l
EM41-2025-20C	Comb 1.0 mm/20 teeth for Maxigel Horizontal System M, Sample volume: 30 $\mu$ l
EM41-2025-24C	Comb 1.0 mm/24 teeth for Maxigel Horizontal System M, Sample volume: 24 $\mu$ l
EM41-2025-24D	Comb 1.5 mm/24 teeth for Maxigel Horizontal System M, Sample volume: 37 $\mu$ l

Code	Description
EM41-2025-28C	Comb 1.0 mm/28 teeth for Maxigel Horizontal System M, Sample volume: 19 $\mu$ l
EM41-2025-28D	Comb 1.5 mm/28 teeth for Maxigel Horizontal System M, Sample volume: 28 $\mu$ l
EM41-2025-32C	Comb 1.0 mm/32 teeth for Maxigel Horizontal System M, Sample volume: 15 $\mu$ l
EM41-2025-32D	Comb 1.5 mm/32 teeth for Maxigel Horizontal System M, Sample volume: 22 $\mu$ l
EM41-2025-36C	Comb 1.0 mm/36 teeth for Maxigel Horizontal System M, Sample volume: 13 $\mu$ l
EM41-2025-36D	Comb 1.5 mm/36 teeth for Maxigel Horizontal System M, Sample volume: 20 $\mu$ l
EM41-2025-8C	Comb 1.0 mm/8 teeth for Maxigel Horizontal System M, Sample volume: 85 $\mu$ l
EM41-2025-8D	Comb 1.5 mm/8 teeth for Maxigel Horizontal System M, Sample volume: 127 $\mu$ l
EM41-2025-EG	End Gates, Set of 2, includes gasket, for Maxigel Horizontal System M
EM41-2025-GK	Replacement gaskets, Set of 2, for Maxigel Horizontal System M
EM41-2025-MT2C	Microtiter Comb 1.0 mm/42 teeth for Maxigel Horizontal System M, Sample volume: 11 $\mu$ l
EM41-2025-MT2D	Microtiter Comb 1.5 mm/42 teeth for Maxigel Horizontal System M, Sample volume: 16 $\mu$ l
EM41-2025-MTC	Microtiter Comb 1.0 mm/21 teeth for Maxigel Horizontal System M, Sample volume: 27 $\mu$ l
EM41-2025-MTD	Microtiter Comb 1.5 mm/21 teeth for Maxigel Horizontal System M, Sample volume: 40 $\mu$ l
EM41-2025-PD	Preparative Comb 1.5 mm/2 teeth for Maxigel Horizontal System M, Sample volume: 1052/28 $\mu$ l
EM41-2025-UVT	UVT Gel Tray, 20 cmW x 25 cmL gel size for Maxigel Horizontal System M
EM41-2025-WC	Wall Comb for Maxigel Horizontal System M, 1.5 mm thick

## Maxi L

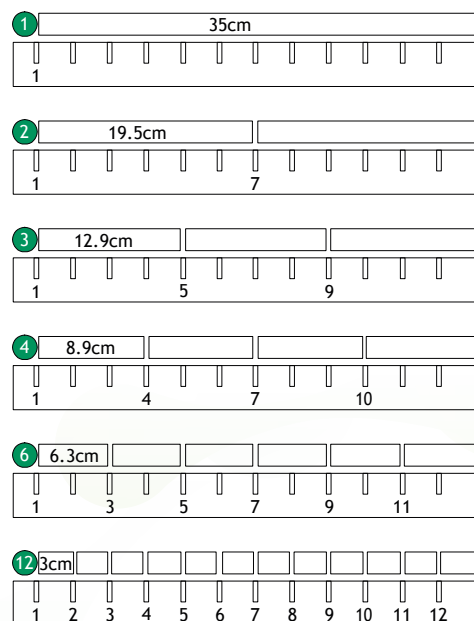
### System Components:

- Buffer Chamber with Platinum Electrodes
- SuperSafe with Attached Leads
- UV-Transmissible (UVT) Gel Tray with Endgates
- Three Point Leveling Base
- 4 Combs: 1.5 mm thickness (2 x 25, 2 x 50 teeth)



### Features

- ✓ Gel Size: 23 x 40 cm
- ✓ Footprint: 32 x 10 x 53 cm
- ✓ Sample Flexibility: max. 600
- ✓ Buffer Volume: 4500 mL
- ✓ Gel Volume: 460 mL



## Ordering information

Code	Description
EM41-2340	Extra Wide Large Format Gel System, 23.5 cmW x 40 cmL gel size with Buffer Exchange Ports standard. Includes 2x 25 tooth and 2x 50 tooth, 1.5 mm Combs
<b>Accessories</b>	
EM41-2340-EG	End Gates, Set of 2, includes gasket for Extra Wide and Extra Wide Large Format Gel Systems
EM41-2340-UVT	UVT Gel Tray with Gasketed End Gates, 23.5 cm x 40 cmL gel for Extra Wide Large Format Gel System

## Maxi ExW

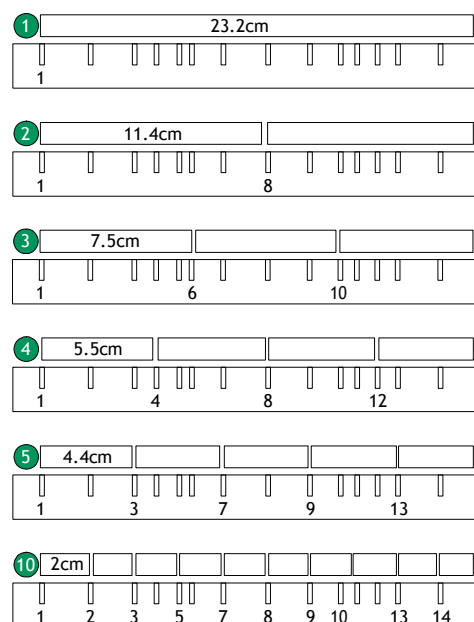
### System Components:

- Buffer Chamber
- SuperSafe Lid with Attached Leads
- UV-Transmissible (UVT) Gel Tray with Endgates
- Three Point Leveling Base
- 4 Combs: 1.5 mm thickness (2 x 25, 2 x 50 teeth)



## Features

- ✓ Gel Size: 23 x 25 cm
- ✓ Footprint (W x H x L): 30 x 11 x 37 cm
- ✓ Sample Flexibility: max. 500
- ✓ Buffer Capacity: max. 3000 mL
- ✓ Gel Volume: 160 mL



## Ordering information

Code	Description
EM41-2325	Extra Wide Format Gel System, 23.5 cmW x 25 cmL gel tray w/ end gates. Includes 2x 25 tooth and 2x 50 tooth, 1.5 mm Combs
EM41-2325R	Extra Wide Format Gel System, 23.5 cmW x 25 cmL w/ integral buffer circulation
<b>Accessories</b>	
EM41-2325-UVT	UVT Gel tray with Gasketed End Gates, 23.5 cmW x 25 cmL for Extra Wide Format Gel System

# Vertical Systems

## Vertical Gel Electrophoresis Systems

**Galileo Bioscience** vertical electrophoresis systems come in four different formats to accommodate quick or high-resolution separation for a wide range of sample numbers.

System Components:

- Casting base with silicon mats
- 4 glass plate pair sets
- 2 or 4 Combs and spacer sets (depending on model)
- 1 blind plate for single-gel runs
- 2 replacement gaskets

### Features

- ✓ 3-cathode technology and platinum-plated electrodes for exceptional electrical field uniformity and distortion-free gel runs
- ✓ Centrally located flow cooling system made with alumina ceramic ensures optimal heat removal and outstanding separation efficiency even at high currents
- ✓ Asymmetrical configuration of electrical contacts prevents mismatching of electrodes
- ✓ Easy-to-use casting system: gel casting directly in the chamber assembly on casting base with silicone sealing mats for agarose-free sealing
- ✓ “Blocking plate” for single-gel run

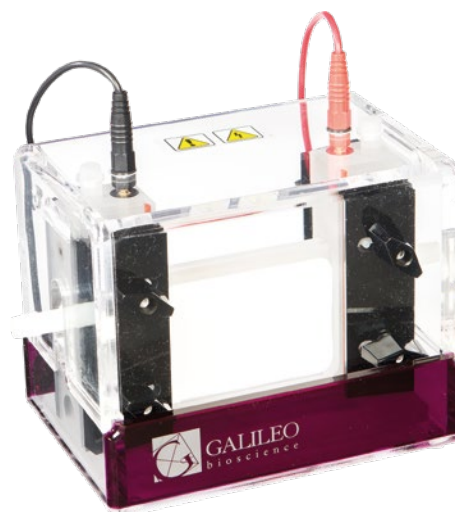
## Double sided water cooled vertical system

System Components:

- Complete System with Internal Cooling Core
- SuperSafe Cover with Attached Leads
- 4 Glass Plates, 2 Notched Glass Plates
- 2 Notched Ceram Plates
- 2 Combs: 0.8 mm, 10 teeth
- 2 Spacer Sets: 0.8 mm
- 2 Replacement Gaskets
- 1 Blocking Plate
- 1 SpacerPlacer
- 1 Casting Base

### Features

- ✓ Gel Size: 10 x 10 cm
- ✓ Footprint: 17 x 14 x 13 cm
- ✓ Sample Flexibility: max. 24
- ✓ Buffer Volume: 250 mL



### Ordering information

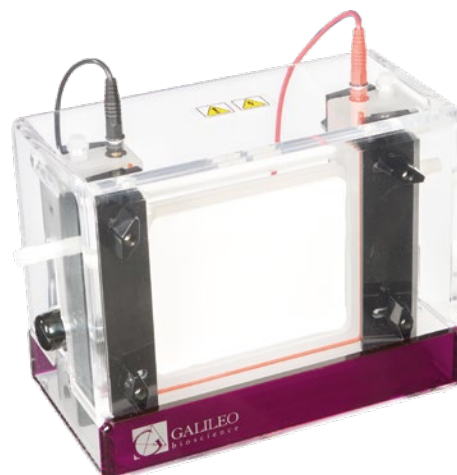
Code	Description
EM45-1010	Double sided water cooled vertical system, 10 cm x 10 cm w/casting base, (4) blank glass, (2) notched glass & (2) notched alumina. Two Combs, 10 tooth, 0.8 mm Thick & (4) side spacers
<b>Accessories</b>	
EM45-1010-10C	Comb, 0.75 mm thick, 10 tooth Sample volume: 50 µl
EM45-1010-10D	Comb, 1.5 mm thick, 10 tooth Sample volume: 90 µl
EM45-1010-10G	Plain glass, 10 cmW x 10 cmH x 2.4 mm thick
EM45-1010-10R	Notched glass, 10 cmW x 10 cmH x 2.4 mm thick
EM45-1010-10RA	Notched alumina, 10 cmW x 10 cmH x 1 mm thick

Code	Description
EM45-1010-12C	Comb, 0.75 mm thick, 12 tooth Sample volume: 35 $\mu$ l
EM45-1010-12D	Comb, 1.5 mm thick, 12 tooth Sample volume: 70 $\mu$ l
EM45-1010-6C	Comb, 0.75 mm thick, 6 tooth Sample volume: 95 $\mu$ l
EM45-1010-6D	Comb, 1.5 mm thick, 6 tooth Sample volume: 175 $\mu$ l
EM45-1010-8C	Comb, 0.75 mm thick, 8 tooth Sample volume: 65 $\mu$ l
EM45-1010-8D	Comb, 1.5 mm thick, 8 tooth Sample volume: 120 $\mu$ l
EM45-1010-CB	Casting base
EM45-1010-CG	Replacement gasket, set of (2) for Casting Base
EM45-1010-CL	Side Clamps, set of (2)
EM45-1010-CU	Complete Casting Stand
EM45-1010-GK	Replacement gasket, set of (2) for Upper Buffer Chamber
EM45-1010-SC	Spacer Set, 0.75 mm thick
EM45-1010-SD	Spacer Set, 1.5 mm thick
EM45-1010-SP	Spacer Placer
EM45-1010-WK	Wing Knobs, set of (2)

## Double Twin M

### System Components:

- Complete System with Internal Cooling Core
- SuperSafe Cover with attached leads
- 4 Glass Plates, 4 Notched Glass Plates
- 4 Combs, 1.5 mm (2 x 10, 2 x 15 teeth)
- 4 Spacer Sets, 1.5 mm
- 2 Replacement gaskets
- 1 Blocking plate
- 1 Casting base



### Features

- ✓ Gel Size: 16 x 14 cm
- ✓ Footprint: 25 x 20 x 14 cm
- ✓ Sample Flexibility: max. 48
- ✓ Buffer Volume: 650 mL

### Ordering information

Code	Description
EM45-1614	Double sided water cooled vertical system, 16 cmW x 14 cmH/casting base, (4) Plain & (4) Notched Glass, (4) Combs, (2) 10 well & (2) 15 well and (8) side spacers, 1.5 mm T
<b>Accessories</b>	
EM45-1614-10C	Comb, 0.8 mm thick, 10 tooth Sample volume: 125 $\mu$ l
EM45-1614-10D	Comb, 1.5 mm thick, 10 tooth Sample volume: 234 $\mu$ l
EM45-1614-14G	Plain glass, 16 cmW x 14 cmH x 3.2 mm (SINGLE PIECE)
EM45-1614-14R	Notched glass, 16 cmW x 14 cmH x 3.2 mm thick (SINGLE PIECE)
EM45-1614-15C	Comb, 0.8 mm thick, 15 tooth Sample volume: 75 $\mu$ l
EM45-1614-15D	Comb, 1.5 mm thick, 15 tooth Sample volume: 140 $\mu$ l
EM45-1614-20C	Comb, 0.8 mm thick, 20 tooth Sample volume: 50 $\mu$ l
EM45-1614-20D	Comb, 1.5 mm thick, 20 tooth Sample volume: 90 $\mu$ l
EM45-1614-24C	Comb, 0.8 mm thick, 24 tooth Sample volume: 35 $\mu$ l
EM45-1614-24D	Comb, 1.5 mm thick, 24 tooth Sample volume: 65 $\mu$ l
EM45-1614-CB	Casting Base
EM45-1614-CG	Replacement gasket, set of (2) for Casting Base

Code	Description
EM45-1614-CL	Side clamps, set of (2)
EM45-1614-CU	Complete Casting Stand
EM45-1614-GK	Replacement gasket, set of (2) for Upper Buffer Chamber
EM45-1614-PD	Preparative Comb, 1.5 mm thick
EM45-1614-SC	Spacer set (3), 0.8 mm thick
EM45-1614-SD	Spacer set (3), 1.5 mm thick

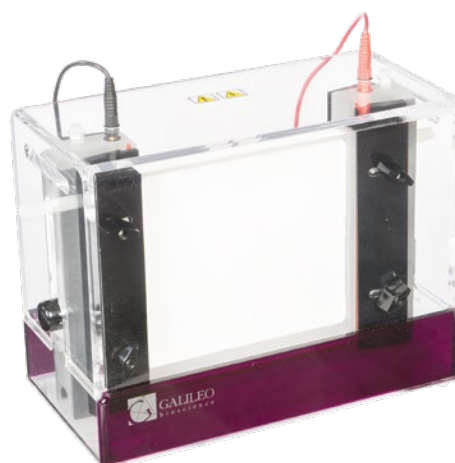
## Double Twin L

System Components:

- Complete System with Internal Cooling Core
- SuperSafe Cover with attached leads
- 4 Glass Plates, 4 Notched Glass Plates
- 4 Combs, 1.5 mm (2 x 15, 2 x 20 teeth)
- 4 Spacer Sets, 1.5 mm
- 2 Replacement gaskets
- 1 Blocking plate
- 1 Casting base

## Features

- ✓ Gel Size: 20 x 20 cm
- ✓ Footprint: 30 x 24 x 17
- ✓ Sample Flexibility: max. 50
- ✓ Buffer Volume: 1250 mL



## Ordering information

Code	Description
EM45-2020	Double sided water cooled vertical system, 20 cmW x 20 cmH/casting base, (4) Plain & (4) Notched Glass, (4) Combs, (2) 15 well & (2) 20 well and (8) side spacers
<b>Accessories</b>	
EM45-2020-10D	Comb, 1.5 mm thick, 10 tooth Sample volume: 305 µl
EM45-2020-15C	Comb, 0.8 mm thick, 15 tooth Sample volume: 100 µl
EM45-2020-15D	Comb, 1.5 mm thick, 15 tooth Sample volume: 185 µl
EM45-2020-20C	Comb, 0.8 mm thick, 10 tooth Sample volume: 65 µl
EM45-2020-20D	Comb, 1.5 mm thick, 20 tooth Sample volume: 125 µl
EM45-2020-20G	Plain glass, 20 cmW x 20 cmH x 3.2 mm thick (SINGLE PIECE)
EM45-2020-20R	Notched glass, 20 cmW x 20 cmH x 3.2 mm thick (SINGLE PIECE)
EM45-2020-25D	Comb, 1.5 mm thick, 25 tooth Sample volume: 90 µl
EM45-2020-CB	Casting Base
EM45-2020-CG	Replacement gasket, set of (2) for casting Base
EM45-2020-CL	Side Clamps, set of (2)
EM45-2020-CU	Complete Casting Stand
EM45-2020-GK	Replacement gasket, set of (2) for Upper Buffer Chamber
EM45-2020-I	Double sided water cooled vertical system, 20 cmW x 20 cmH, WITHOUT CASTER
EM45-2020-PD	Preparative Comb, 1.5 mm thick Sample volume: 3330/110 µl
EM45-2020-SC	Spacer Set (2), 0.8 mm thick
EM45-2020-SD	Spacer Set (2), 1.5 mm thick
EM45-1614-SD	Spacer set (3), 1.5 mm thick



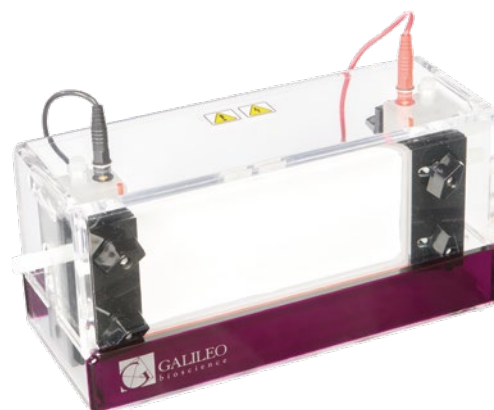
## Double Twin ExWs

### System Components:

- Complete System with Internal Cooling Core
- SuperSafe Cover with attached leads
- 4 Glass Plates, 4 Notched Glass Plates
- 4 Combs: 0.8 mm thick (2 x 15, 2 x 20 teeth)
- 4 Spacer Sets: 0.8 mm
- 2 Replacement gaskets
- 1 Blocking plate
- 1 Casting base

### Features

- ✓ Gel Size: 20 x 10 cm
- ✓ Footprint: 30 x 14 x 13 cm
- ✓ Sample Flexibility: max. 72
- ✓ Buffer Volume: 650 mL



### Ordering information

Code	Description
EM45-2010	Double sided water cooled vertical system, 20 cmW x 10 cmH/casting base, (4) Plain & (4) Notched Glass, (4) Combs, (2) 15 well & (2) 20 well and (8) side spacers
<b>Accessories</b>	
EM45-2010-10C	Comb, 0.8 mm thick, 10 tooth Sample volume: 90 µl
EM45-2010-10D	Comb, 1.5 mm thick, 10 tooth Sample volume: 165 µl
EM45-2010-10G	Plain glass, 20 cmW x 10 cmH x 3.0 mm thick (SINGLE PIECE)
EM45-2010-10R	Notched glass, 20 cmW x 10 cmH x 3.0 mm thick (SINGLE PIECE)
EM45-2010-15C	Comb, 0.8 mm thick, 15 tooth Sample volume: 70 µl
EM45-2010-15D	Comb, 1.5 mm thick, 15 tooth Sample volume: 125 µl
EM45-2010-20C	Comb, 0.8 mm thick, 20 tooth Sample volume: 35 µl
EM45-2010-20D	Comb, 1.5 mm thick, 20 tooth Sample volume: 65 µl
EM45-2010-25C	Comb, 0.8 mm thick, 25 tooth Sample volume: 35 µl
EM45-2010-25D	Comb, 1.5 mm thick, 25 tooth Sample volume: 65 µl
EM45-2010-CB	Casting Base
EM45-2010-CG	Replacement gasket, set of (2) for Casting Base
EM45-2010-CL	Replacement clamps, set of (2)
EM45-2010-CU	Complete Casting Stand
EM45-2010-GK	Replacement gasket, set of (2) for Upper Buffer Chamber
EM45-2010-MT2C	2X Microtiter Comb, 0.8 mm thick, 36 tooth Sample volume: 25 µl
EM45-2010-MT2D	2X Microtiter Comb, 1.5 mm thick, 36 tooth Sample volume: 50 µl
EM45-2010-MTC	1X Microtiter Comb, 0.8 mm thick, 18 tooth Sample volume: 55 µl
EM45-2010-MTD	1X Microtiter Comb, 1.5 mm thick, 18 tooth Sample volume: 105 µl
EM45-2010-SC	Spacer set (2), 0.8 mm thick
EM45-2010-SD	Spacer set (2), 1.5 mm thick

# Blotting Systems

**Galileo Bioscience Electroblotting Systems** are designed for the transfer of proteins in conjunction with semi-dry or wetblot techniques. Electroblotting Systems of either types are available in two different sizes.

## 1. Wet Blotting Systems

**Galileo Bioscience Wet Blotting Systems** are designed for the effective and rapid transfer of molecules onto membranes. The platinum-plated titanium anode and stainless steel cathode provide an uniform electrical field for reproducible transfer results. A water circulation system with alumina ceramic wall located at the chamber base manages heat build up ensuring dependable results.



EM52-WEB-20

EM52-WEB-10

### Insight Mini Tank Electroblotter

System Components:

- Buffer chamber with durable plate electrodes
- Platinum-plated Titanium anode
- Stainless steel cathode
- Lid with attached cables
- 4 blotting cassettes
- 8 fibre pads

#### Features

- ✓ Transfer area: 8.5 x 9.5 cm
- ✓ Footprint: 18.5 x 15.5 x 14.5 cm
- ✓ Buffer volume: 1300 mL
- ✓ Blotting capacity: 1 - 4 gels

### Ordering information

Code	Description
EM52-WEB-10	Mini Tank Blotter with four cassettes, 10 x 10 cm
Accessories	
EM52-WEB-SC	Transfer Cassette with pads
EM52-WEB-SF	2x Transfer Pads

### Insight Large Tank Electroblotter

System Components:

- Buffer chamber with durable plate electrodes
- Platinum-plated Titanium anode
- Stainless steel cathode
- Lid with attached cables
- 2 blotting cassettes
- 4 fibre pads

#### Features

- ✓ Transfer area: 18 x 20 cm
- ✓ Footprint: 29 x 35 x 14 cm
- ✓ Buffer volume: 4500 mL
- ✓ Blotting capacity: 1 - 2 gels



### Ordering information

Code	Description
EM52-WEB-20	Large Tank Blotter with two cassettes, 20 x 20 cm
Accessories	
EM52-WEB-MC	Transfer Cassette with pads
EM52-WEB-MF	2x Transfer Pads

## 2. Semi-Dry Electroblotting Systems

Galileo Bioscience 'Semi-Dry' Electroblotting Systems are designed for rapid and Buffer saving transfers of proteins and nucleic acids to membranes. The platinum-coated titanium anode and the high-grade stainless steel cathode form a uniform electrical field and ensure maximum transfer efficiencies. The asymmetrical configuration of electrical contacts prevents mismatching of electrodes.



EM52-1010

EM52-2020

### Insight Semi-Dry Electroblotter Mini

System Components:

- Transfer Area: 10 x 10 cm
- Base with Platinum/Titanium Anode
- Lid with Stainless Steel Cathode
- Interlocking Power Cords
- 3 Heavy Duty Knobs

### Ordering information

Code	Description
EM52-1010	SemiDry electroblotter, 10 x 10 cm. Complete System

### Insight Semi-Dry Electroblotter Maxi

System Components:

- Transfer Area: 20 x 20 cm
- Base with Platinum/Titanium Anode
- Lid with Stainless Steel Cathode
- Interlocking Power Cords
- 3 Heavy Duty Knobs

### Ordering information

Code	Description
EM52-2020	Semidry electroblotter, 20 x 20 cm. Complete System

The background is a solid teal color with a pattern of overlapping, organic, bubble-like shapes in various shades of green. A white dotted line runs vertically from the top left towards the bottom. At the top of this line is a white circle containing the number 7.

7

# GEL DOC SYSTEMS AND TRANSILLUMINATORS



---

# Gel Doc System

## Uvidoc HD6

**NEW**

Unique stand-alone platform and voice-controlled DNA/protein gel workstation, the **Uvidoc HD6** is ideal for crowded labs where automation, ease of use and high-sensitivity are required. Boasting real on-board computer and a giant 12.2" HD touch screen, the new Voice Control© option allows for unrivalled system operation, speed and user-friendliness.

### Features

- ✓ Fully automated system
- ✓ Real on-board computer
- ✓ Giant 12.2" HD touch-screen
- ✓ 6-megapixel native resolution
- ✓ Voice Control© option
- ✓ No learning curve
- ✓ 65, 535 gray levels
- ✓ 26x21 cm imaging area



### Ordering information

Code	Description
UVI164126001	UVIDOC-HD6T TOUCH-PLUS W/O BOX

## Essential V6

NEW

7

The **Essential V6** imaging platform is Uvitec's most compact, yet high-end gel documentation system for DNA, RNA and protein gel imaging, boasting a 3-megapixel, 16-bit sensor offering massive 65, 535 gray scale ideal for lab imaging routine, research-level data collection and accurate protein quantitative analysis.

### Features

- ✓ Fully automated
- ✓ 16-bit imaging
- ✓ 65, 535 gray levels
- ✓ Up to 6-megapixel resolution
- ✓ All-in-one platform
- ✓ No learning curve
- ✓ Stainless-steel made
- ✓ Unlimited Software users
- ✓ Pc-based (not included)



### Ordering information

Code	Description
UVI134176091	ESSENTIAL-V6T™ PLUS WL- W/O BOX

## Transilluminators

### UV transilluminators

Choose the most suitable **Uvitec transilluminator** for your applications. Opt for UV box for standard EtBr samples or Uvipure™ transilluminator for maximum fluorescent signal transmission.

Go for a Blue light able for unrivalled irradiation of safe-stained gels or a White light transilluminator for protein gels.



### Specifications and Ordering Informations

Code	Model	Wavelength (nm)	Filter Size (mm)	Tubes x Power (W)
UVI213120121	BXT-20.M	312	20x20	5x8
UVI213126121	BXT-26.M	312	26x21	5x8
UVI213126101	BXT-26.MX, UVI pure	312	26x21	5x8
UVI213120171	BXT-20.Blue	480	20x20	5x8
UVI213120191	BXT-20.W	White Light	20x20	5x8
UVI216126141	BXT-26.LMX, UVI pure	365/312	26x21	5x8

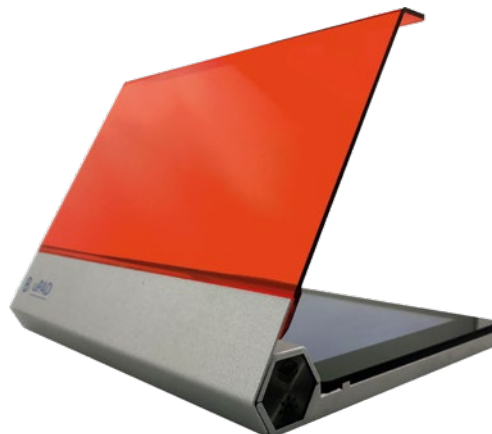
## BluPAD Dual LED Blue/White Light Transilluminator

The **BluPAD**, as an innovatively designed transilluminator with dual light sources, is applicable in various Life Sciences research areas for observing and analyzing the nucleic acids and proteins. Given its most optimal and humanized design for the post-observation applications, such as gel cutting and data imaging and filing, it is desired to provide the researchers with a brand-new comfortable, convenient, and safe experience.

### Features

- ✓ Dual Light Sources: LED White Light and Blue Light
- ✓ Magnetic Filter
- ✓ Bottom-Up LED Illumination
- ✓ Adjustable Light Intensity (3 Levels)
- ✓ 5 Minute Automatic Power-Off
- ✓ Designer Metal Housing
- ✓ Enhanced Portability with the Power Bank

*Note: the power bank is NOT INCLUDED in the package and needs to be purchased by the user.*



### Specifications

- Unit Dimensions (W x L x H): 18.5 x 22 x 3 cm
- Gel Viewing Dimensions (W x L): 12 x 18 cm
- Input Voltage: 100 - 240 V
- Input Current: 2.0 A
- LED Source: Built-in blue light & white light LED module
- LED life (hours): >30,000
- Emission maxima (nm): 470 nm
- Store temperature: 25°C
- Automatic Power-Off: 5 mins
- Filter Type: Amber filter (580 nm)
- Certifications: CE/ETL

### Ordering information

Code	Description
EMBPO01CU	BLUPAD DUAL LED BLUE/WHITE LIGHT TRANSILLUMINATOR

8

# PLATE WASHER





# Plate washer

## CAPPWash Microplate Washer

Compact, Inexpensive and Made For Small Scale Work!

Whether you work in a research or in a clinical laboratory, the compact **CAPPWash Microplate Washer** is the ideal washing tool for small scale immuno assays. Fitting into even the tightest budget, CAPPWash is a perfect alternative to dependence on department washers for washing microplates and strips.

### Features

- ✓ No programming required
- ✓ No electrical wiring connection
- ✓ Just a washer that performs uniformly and efficiently every time!
- ✓ Produced from high-grade stainless steel and polypropylene, the washer is fully autoclavable as well as highly resistant to aggressive chemicals
- ✓ Unique Two-in-One Design: Each tube consists of an inner tube that releases the distilled water washing solution into the wells for rinsing while the outer tube vacuums away the liquid upon completion of the washing procedure
- ✓ Washing is Simple: Simply lower the tubes into the well, then push the knob to fill and release the knob to empty. Now repeat for the desired amount of washings and move on to the next row. It's that simple!
- ✓ Matches all well types: The washer can be set to the desired depth very easily by simply adjusting the two finger screws found on either side of the tubes
- ✓ The CAPPWash is available in 8-channel, 12-channel and 16-channel versions, as well as a 6-channel TubeWash manual washer for 12x75 mm test tubes
- ✓ The vacuum pump is available for 115 V and 230 V connections
- ✓ All components included in the kits can also be purchased individually



### Ordering information

Code	Description
KNW8	CAPPWash 8 channel
KNW12	CAPPWash 12 channel
KNW16	CAPPWash 16 channel
KNW8KIT115V	CAPPWash Kit including W-8, WP-115V, WB-1, WB-3, WB-4, and W-1000 (3 meters)
KNW12KIT230V	CAPPWash Kit including W-12, WP-230V, WB-1, WB-3, WB-4, and W-1000 (3 meters)



The background is a solid teal color with a pattern of overlapping, organic, bubble-like shapes in various shades of green. A white dotted line runs vertically from the top left towards the bottom. At the top of this line is a white circle containing the number 9.

9

# SERVICES



---

## Services

Our Services have been developed to support the everyday life of Researcher and to offer flexible solutions responding to customers' needs.

### Stockroom

---

A Stockroom\* is a storage place for our products created directly at the customer's site: all researchers have access to Euroclone's kits and reagents directly from their Institute (University or Hospital). The Researcher is free to take an item from the Stockroom whenever needed; every month the customer will get a summary of the pickings and the corresponding order will be processed.

The stocks are automatically reinstated by Euroclone based on customer's consumption.

The list of products available in stock is completely customizable and can be modified at any time.

### Virtual Stockroom

---

The Virtual Stockroom service\* allows customers to place orders online through a reserved portal; it is a special system which makes purchase simple and still compliant with MEPA requirements (Mercato Elettronico della Pubblica Amministrazione). Virtual StockRoom's customers not only have dedicated annual supply conditions and offers, but also can take advantage of temporary promotions, both for Euroclone branded products and for distributed product lines.

The ordering procedure is customizable according to the customer's needs.

*\*Stockroom and Virtual Stockroom are services available only in Italy.*

### Scheduled annual deliveries

---

The annual order with the scheduling of deliveries, on agreed dates, allows to avoid problems and delays and always be provided with the right supply of products.

### Technical Sales Specialist

---

Euroclone technical specialists are available providing a wide range of services to support all needs (both for Euroclone products and for distributed products) thus offering important direct support on the Italian territory.

- ✓ Pre and post sales consultancy
- ✓ Instrument installation
- ✓ Training using instruments
- ✓ Technical and practical demonstrations
- ✓ Technical assistance
- ✓ Troubleshooting
- ✓ Scientific support

### Technical Sales Assistant

---

The technical assistant takes care of all the post-sales operational needs.

- ✓ Provides technical information
- ✓ Handles requests with the supplier technical service
- ✓ Technical support on the consumable

Contact: [tsa@euroclone.it](mailto:tsa@euroclone.it) / 800-315911

## Quality

---

The medical devices we market and the in vitro diagnostic devices used in cytogenetics comply with European regulations 2017/745 e 2017/746. Euroclone sells its own brand products in Europe and in non-European countries in compliance with international regulations, including the DUAL USE regulation.

Euroclone is a supplier of companies in the Biotech area – Pharma that work in GMP, and guarantees products FFM (For Further Manufacture) in compliance with specific Quality Technical Agreement defined with individual customers.

## Certifications

---

### **ISO 9001, ISO 13485 e ISO 14001.**

**ISO 9001 and ISO 13485** certify that our company, from the point of view of design, development, technical assistance and marketing for products for life sciences, medical devices and in vitro diagnostic devices, complies with the regulations currently in force.

**ISO 14001** certifies that Euroclone works in full respect of the environment and its actions are characterized by a strong ecological footprint.

---

## Notes



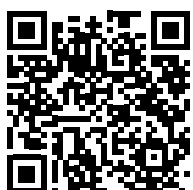


**EuroClone®**  
A C A D E M Y

# DISCOVER ALL OUR GUIDES!

Scan the QR Code below to discover all our guides:

- Esosomi
- Car-T
- Sferoidi
- Epigenetica
- Single Cell
- NGS 5.0
- Processi Cellulari
- Sample Preparation
- SARS-CoV-2
- Produzione Terapie Cellulari
- Produzione Proteine Ricombinanti
- Drug Discovery



Some of the brands mentioned in the guides are available through Euroclone only in Italy.



**EuroClone**  
ACADEMY

GUIDA AL MONDO  
NGS 5.0




10x GENOMICS | Biotropic | Cell Signaling TECHNOLOGY | sage science | sptlabtech

MGI | PARAGON GENOMICS | magtivio | cytiva | Covaris | Lonza

Zymo Research | BioLabs | BMG LABTECH | IMPLEN | SBI

**EuroClone**  
BIOTECH INDUSTRY

GUIDA AL MONDO  
DRUG DISCOVERY




BMG LABTECH | sptlabtech | eppendorf | CEDARLANE

Enzo | 10x GENOMICS | greiner bio-one | Cell Signaling TECHNOLOGY | Lonza

**EuroClone**  
ACADEMY

GUIDA AL MONDO  
CELL CULTURE




SBI | Cell Signaling TECHNOLOGY | Zymo Research

PROCESSI CELLULARI

**EuroClone**  
ACADEMY

GUIDA AL MONDO  
PROCESSI CELLULARI




Cell Signaling TECHNOLOGY | greiner bio-one | eppendorf

Lonza | Enzo | cytiva

SINGLE CELL

**EuroClone**  
ACADEMY

GUIDA AL MONDO  
SINGLE CELL




10x GENOMICS | Biotropic | Enzo | eppendorf

CORNING | greiner bio-one | SCIENION | cytiva | Lonza

PanReac AppliChem | BioLabs | CEDARLANE | Nordmark

GUIDA SFEROIDI

**EuroClone**  
ACADEMY

GUIDA AL MONDO  
SFEROIDI




greiner bio-one | Lonza

PRODUZIONE PROTEINE RICOMBINANTI

**EuroClone**  
BIOTECH INDUSTRY

GUIDA AL MONDO  
PRODUZIONE  
PROTEINE RICOMBINANTI




EPIGENETICA

**EuroClone**  
ACADEMY

GUIDA AL MONDO  
EPIGENETICA






Cell Signaling TECHNOLOGY | Enzo | sptlabtech

Car-T

**EuroClone**  
ACADEMY

GUIDA AL MONDO  
CAR-T

**EuroClone®**  
serving science through innovation

**Euroclone SpA**  
**Società a Socio Unico**

Via Figino, 20/22  
20016 Pero (MI) Italy  
T +39 02 38195.1  
F +39 02 33913713  
M tsa@euroclone.it

**[www.euroclone.it](http://www.euroclone.it)**

Quality Management Systems and  
Environmental certified according to  
EN ISO 9001, ISO 13485 and EN ISO 14001